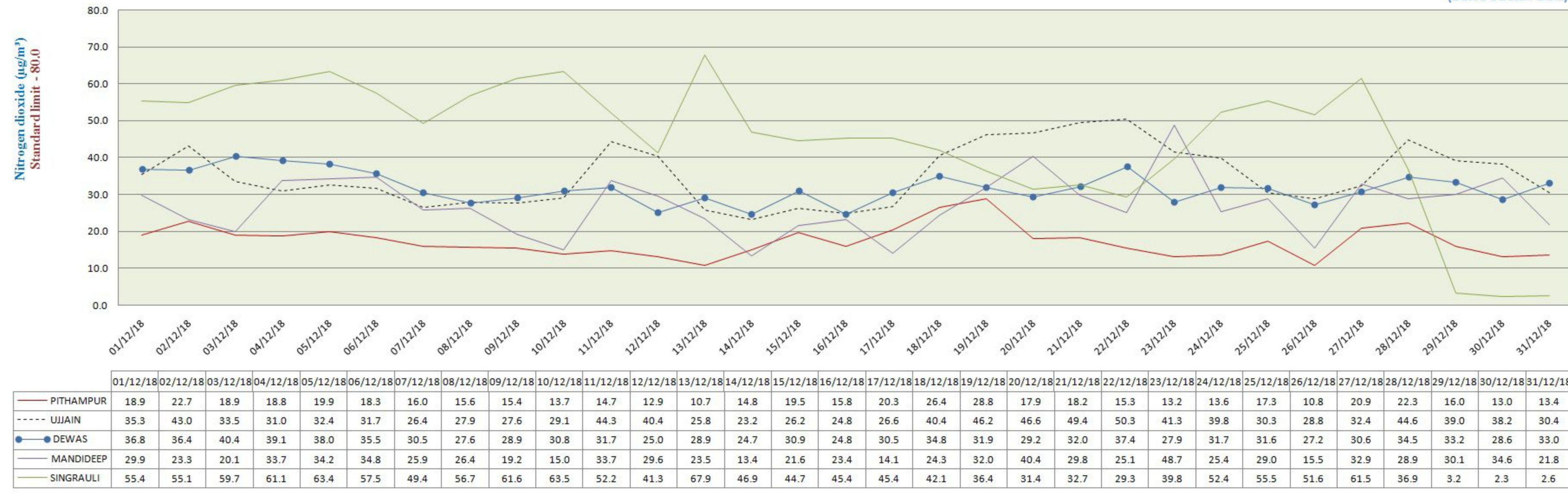


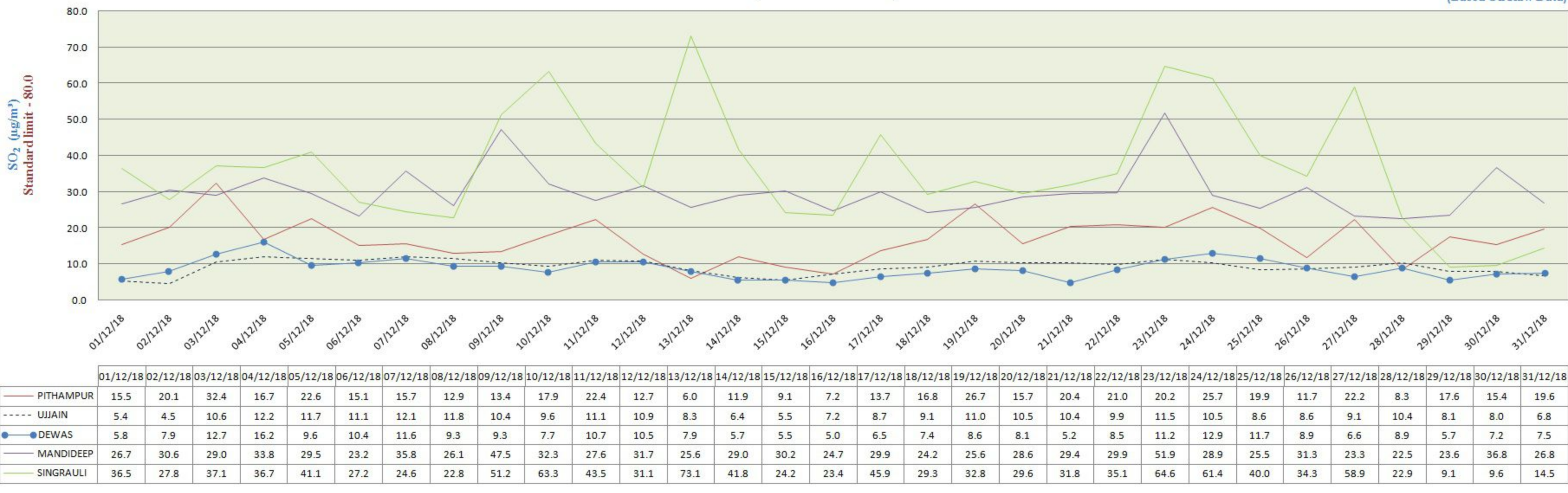
### City-wise Comparative Trend of Nitrogen dioxide (NO<sub>2</sub>) (December - 2018)

(Based On Raw Data)



### City-wise Comparative Trend of Sulphur dioxide (SO<sub>2</sub>) (December - 2018)

(Based On Raw Data)



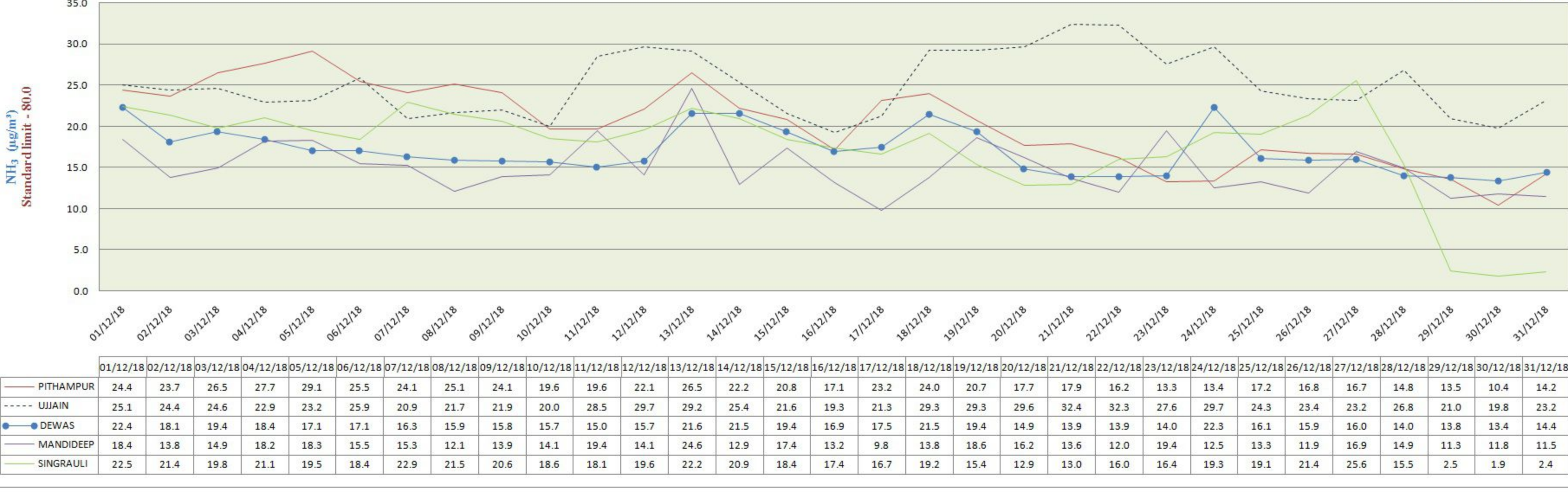
### City-wise Comparative Trend of Ozone (O<sub>3</sub>) (December - 2018)

(Based On Raw Data)



### City-wise Comparative Trend of Ammonia (NH<sub>3</sub>) (December - 2018)

(Based On Raw Data)



### City-wise Comparative Trend of Carbon Monoxide (CO) (December - 2018)

(Based On Raw Data)

