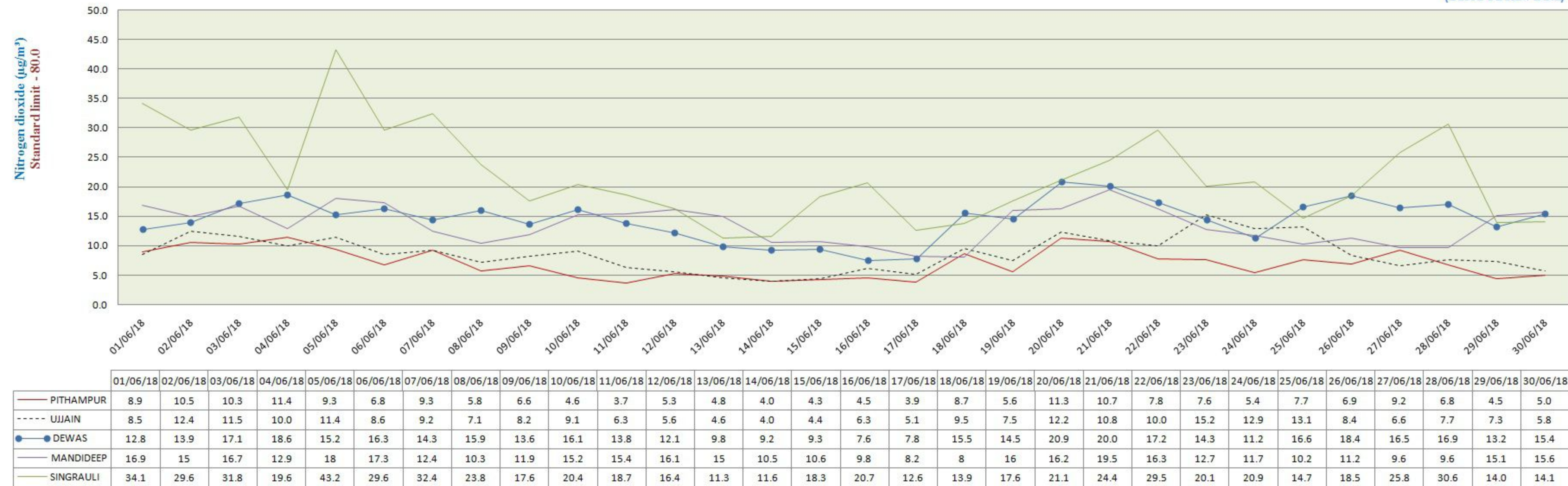


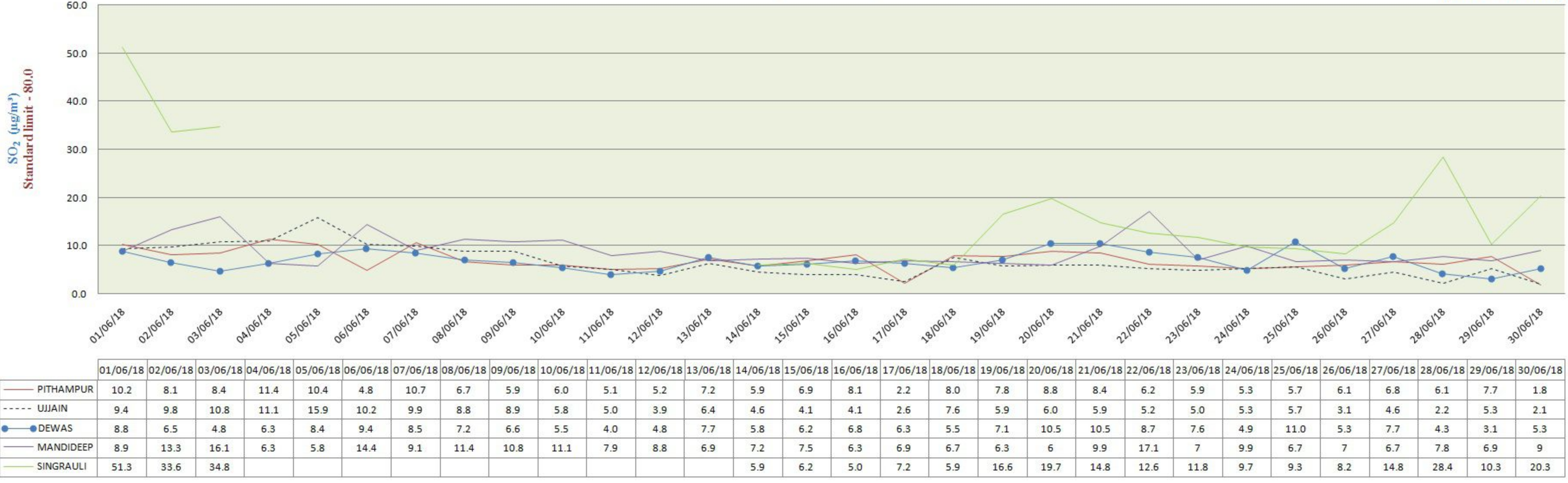
City-wise Comparative Trend of Nitrogen dioxide (NO₂) (June - 2018)

(Based On Raw Data)



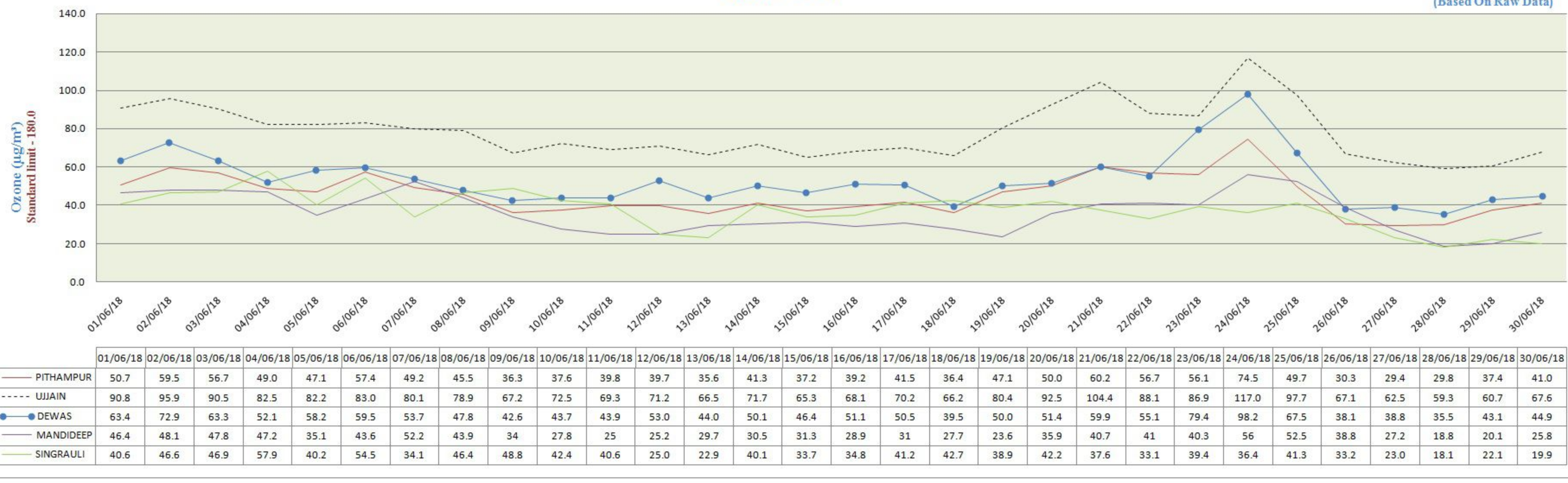
City-wise Comparative Trend of Sulphur dioxide (SO₂) (June - 2018)

(Based On Raw Data)



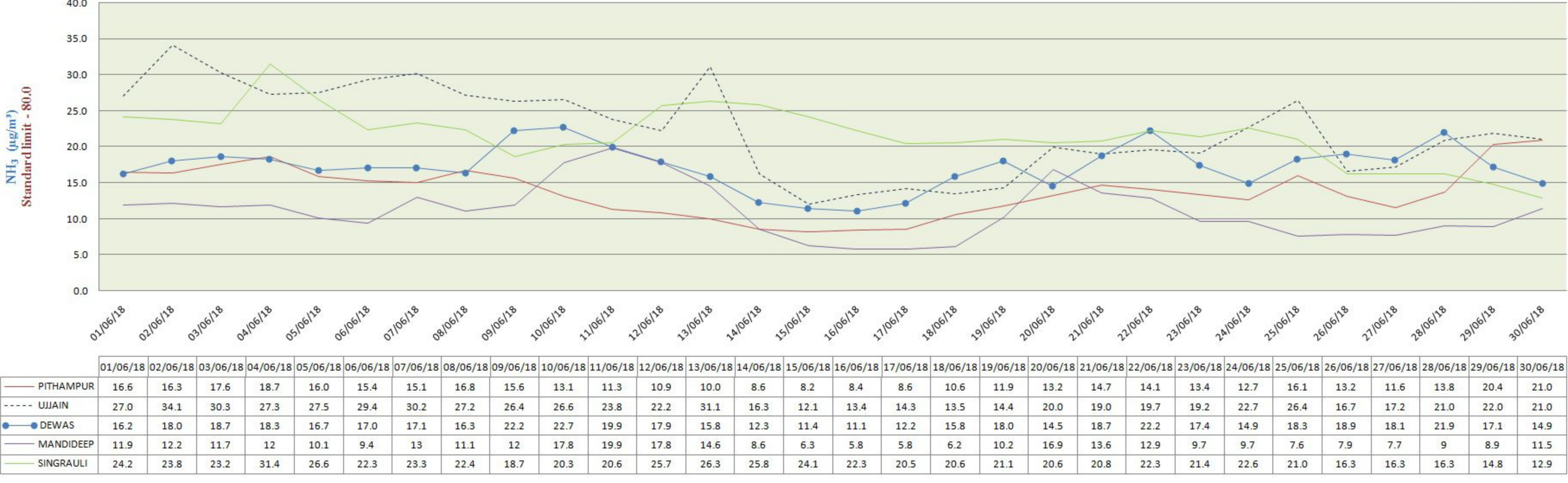
City-wise Comparative Trend of Ozone (O₃) (June - 2018)

(Based On Raw Data)



City-wise Comparative Trend of Ammonia (NH₃) (June - 2018)

(Based On Raw Data)



City-wise Comparative Trend of Carbon Monoxide (CO) (June - 2018)

(Based On Raw Data)

