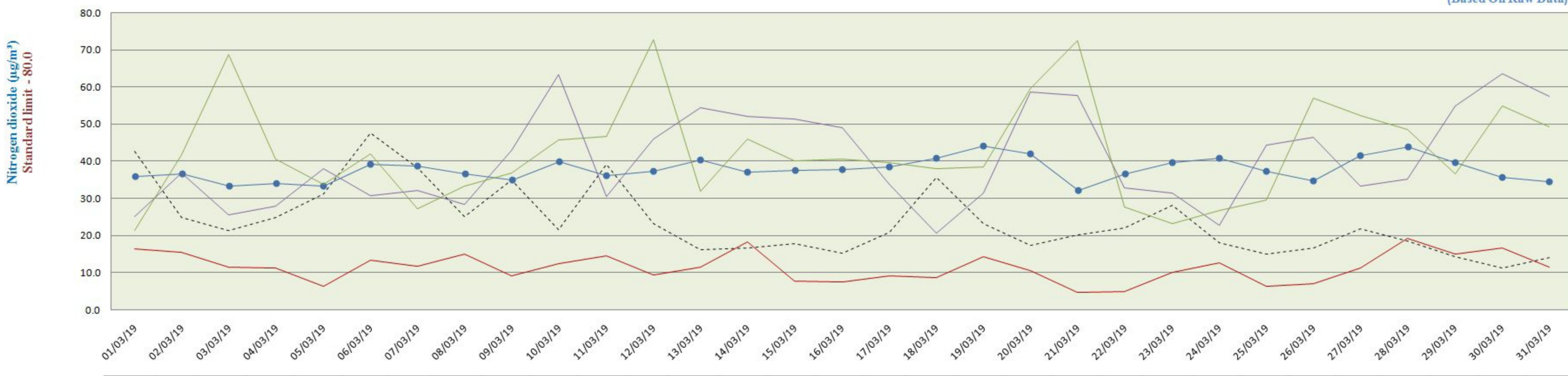


City-wise Comparative Trend of Nitrogen dioxide (NO₂) (March - 2019)

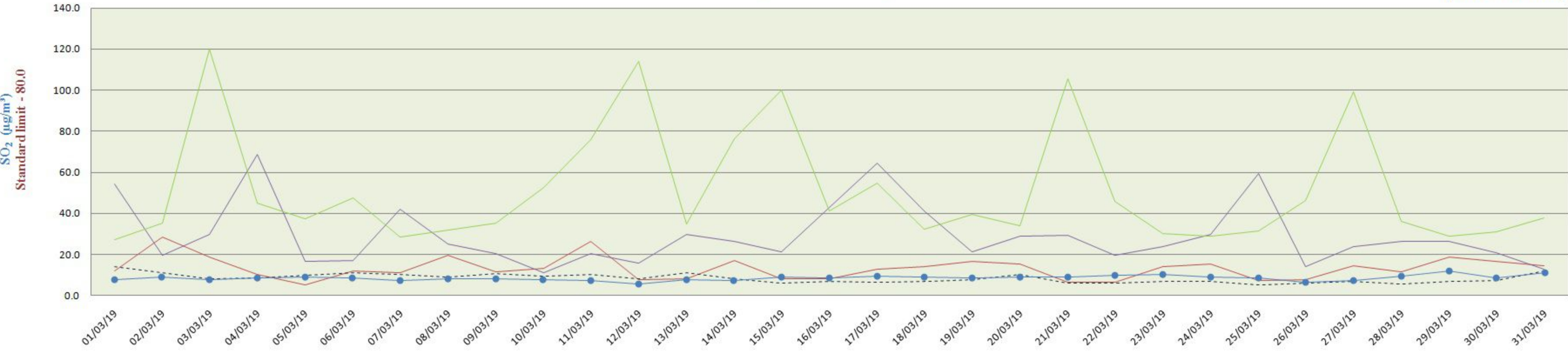
(Based On Raw Data)



	01/03/19	02/03/19	03/03/19	04/03/19	05/03/19	06/03/19	07/03/19	08/03/19	09/03/19	10/03/19	11/03/19	12/03/19	13/03/19	14/03/19	15/03/19	16/03/19	17/03/19	18/03/19	19/03/19	20/03/19	21/03/19	22/03/19	23/03/19	24/03/19	25/03/19	26/03/19	27/03/19	28/03/19	29/03/19	30/03/19	31/03/19
PITHAMPUR	16.6	15.7	11.5	11.4	6.5	13.6	11.7	15.2	9.2	12.6	14.8	9.6	11.5	18.4	7.7	7.7	9.2	8.7	14.5	10.8	4.8	5.1	10.1	12.8	6.3	7.2	11.3	19.3	15.2	16.8	11.6
UJJAIN	42.7	24.9	21.5	24.9	31.3	47.6	38.3	25.1	35.0	21.7	39.1	23.2	16.2	16.7	17.8	15.3	21.0	35.7	23.3	17.3	20.3	22.0	28.1	18.1	15.1	16.8	22.0	18.6	14.4	11.3	14.0
DEWAS	35.9	36.4	33.1	33.9	33.3	39.2	38.5	36.4	34.8	39.8	36.1	37.3	40.3	37.0	37.5	37.7	38.5	40.6	44.1	41.9	32.3	36.5	39.4	40.7	37.2	34.5	41.5	43.8	39.5	35.6	34.5
MANDIDEEP	24.9	36.7	25.5	27.9	37.9	30.6	31.9	28.3	42.8	63.2	30.5	45.9	54.3	52.0	51.3	48.9	33.6	20.6	31.3	58.5	57.6	32.9	31.4	22.8	44.2	46.5	33.3	35.1	54.8	63.5	57.3
SINGRAULI	21.4	41.8	68.9	40.6	33.8	42.0	27.1	33.4	36.9	45.7	46.7	72.8	31.8	46.1	40.1	40.6	39.6	38.0	38.4	59.6	72.7	27.8	23.2	26.7	29.5	57.1	52.4	48.6	36.5	55.0	49.4

City-wise Comparative Trend of Sulphur dioxide (SO₂) (March - 2019)

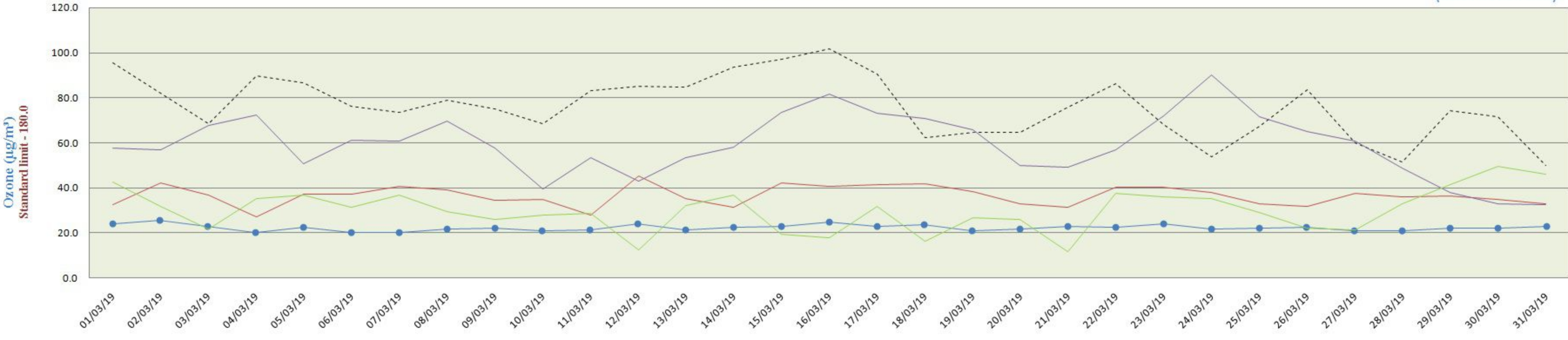
(Based On Raw Data)



	01/03/19	02/03/19	03/03/19	04/03/19	05/03/19	06/03/19	07/03/19	08/03/19	09/03/19	10/03/19	11/03/19	12/03/19	13/03/19	14/03/19	15/03/19	16/03/19	17/03/19	18/03/19	19/03/19	20/03/19	21/03/19	22/03/19	23/03/19	24/03/19	25/03/19	26/03/19	27/03/19	28/03/19	29/03/19	30/03/19	31/03/19
PITHAMPUR	12.0	28.4	18.8	10.1	5.2	11.7	11.0	19.4	11.5	13.1	26.4	7.8	8.2	16.8	8.1	8.2	12.8	14.2	16.4	15.4	6.5	6.4	14.1	15.5	7.4	7.6	14.3	11.5	18.6	16.7	14.6
UJJAIN	14.2	11.4	8.2	8.7	9.9	11.0	10.6	9.1	10.7	9.3	10.3	8.2	11.0	8.3	6.3	6.8	6.6	7.0	7.7	10.6	6.1	6.2	7.1	7.1	5.2	5.9	7.0	5.8	7.1	7.4	12.0
DEWAS	7.7	8.9	7.8	8.4	9.1	8.7	7.1	8.0	8.2	7.8	7.2	6.0	7.7	7.4	8.9	8.3	9.5	9.0	8.7	8.9	9.2	9.7	10.1	8.8	8.5	6.6	7.4	9.3	12.1	8.5	11.3
MANDIDEEP	54.3	19.5	29.9	68.6	16.8	17.0	42.1	25.1	20.4	11.2	20.5	15.9	29.9	26.6	21.5	42.9	64.5	41.1	21.3	29.0	29.6	19.6	24.0	29.6	59.4	14.3	23.8	26.6	26.5	20.8	13.1
SINGRAULI	27.4	35.4	119.7	45.0	37.3	47.6	28.7	32.1	35.2	52.7	75.9	113.9	35.1	76.4	99.8	41.4	54.8	32.3	39.4	34.3	105.4	45.9	30.3	29.2	31.5	46.2	99.1	36.2	29.2	31.3	37.9

City-wise Comparative Trend of Ozone (O₃) (March - 2019)

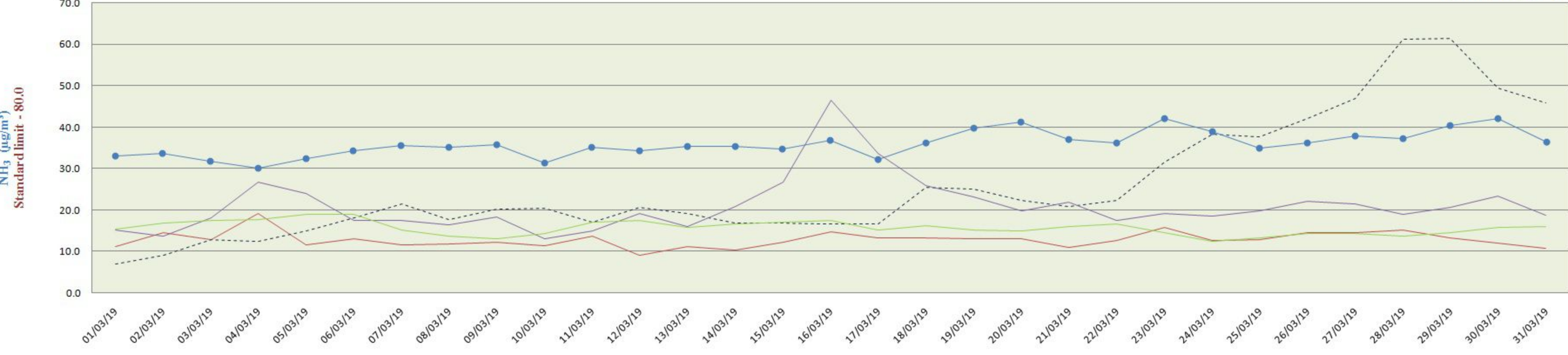
(Based On Raw Data)



	01/03/19	02/03/19	03/03/19	04/03/19	05/03/19	06/03/19	07/03/19	08/03/19	09/03/19	10/03/19	11/03/19	12/03/19	13/03/19	14/03/19	15/03/19	16/03/19	17/03/19	18/03/19	19/03/19	20/03/19	21/03/19	22/03/19	23/03/19	24/03/19	25/03/19	26/03/19	27/03/19	28/03/19	29/03/19	30/03/19	31/03/19
PITHAMPUR	32.8	42.1	36.9	27.3	37.0	37.1	40.6	38.9	34.6	34.7	28.1	45.1	35.2	31.4	42.2	40.6	41.3	41.8	38.4	32.9	31.5	40.1	40.3	37.8	32.8	31.9	37.4	36.2	36.3	35.0	33.1
UJJAIN	95.4	82.1	68.7	89.8	86.6	76.1	73.6	78.8	74.9	68.4	83.3	85.1	84.7	93.4	97.0	101.7	90.7	62.5	64.8	64.7	75.9	86.5	67.9	54.0	67.3	83.5	60.1	51.4	74.3	71.5	50.0
DEWAS	24.4	26.0	23.2	20.9	22.8	20.3	20.2	22.0	22.2	21.0	21.6	24.0	21.7	22.7	23.1	25.0	23.0	23.9	21.2	22.1	23.0	22.8	24.3	21.8	22.3	22.7	21.2	21.0	22.3	22.5	23.2
MANDIDEEP	57.7	56.9	67.8	72.5	50.9	61.0	60.9	69.5	57.6	39.7	53.3	42.9	53.6	58.0	73.5	81.4	73.1	70.6	65.7	49.9	49.2	56.8	71.7	90.0	71.3	64.8	60.9	48.9	37.9	33.3	32.7
SINGRAULI	42.6	31.8	21.7	35.3	37.0	31.3	36.9	29.5	25.8	27.9	28.7	12.5	32.3	36.8	19.6	18.1	31.6	16.5	26.7	26.1	11.8	37.4	35.8	35.4	29.3	22.2	21.3	33.0	41.3	49.5	46.0

City-wise Comparative Trend of Ammonia (NH₃) (March - 2019)

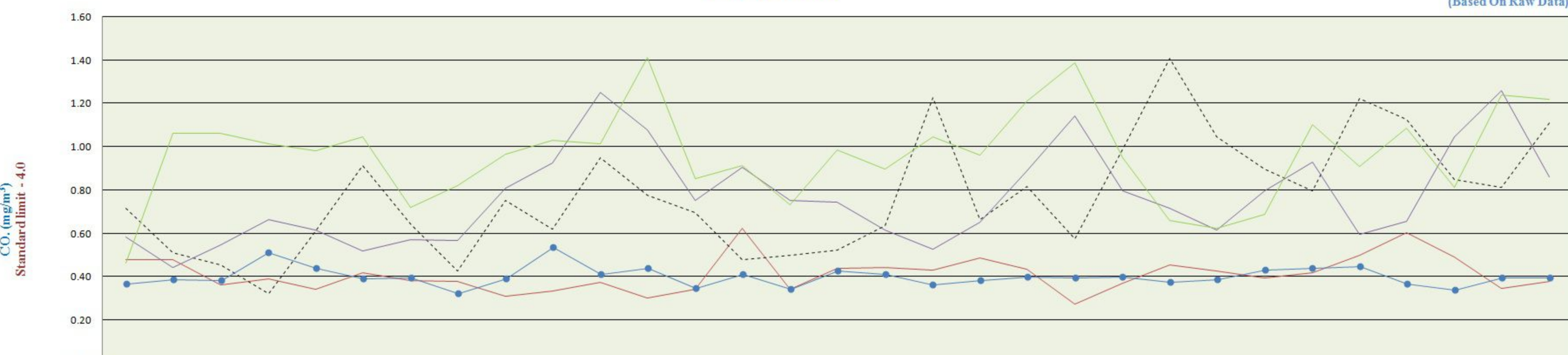
(Based On Raw Data)



	01/03/19	02/03/19	03/03/19	04/03/19	05/03/19	06/03/19	07/03/19	08/03/19	09/03/19	10/03/19	11/03/19	12/03/19	13/03/19	14/03/19	15/03/19	16/03/19	17/03/19	18/03/19	19/03/19	20/03/19	21/03/19	22/03/19	23/03/19	24/03/19	25/03/19	26/03/19	27/03/19	28/03/19	29/03/19	30/03/19	31/03/19
PITHAMPUR	11.1	14.6	12.8	19.1	11.5	13.0	11.6	11.7	12.2	11.3	13.6	9.1	11.1	10.3	12.2	14.6	13.4	13.3	13.0	13.1	11.0	12.6	15.9	12.6	12.8	14.5	14.6	15.1	13.2	12.0	10.8
UJJAIN	6.9	8.9	12.8	12.5	14.9	18.0	21.5	17.5	20.2	20.4	16.9	20.6	19.1	16.8	16.7	16.6	16.7	25.5	25.0	22.2	20.8	22.3	31.6	38.2	37.7	42.0	46.8	61.0	61.3	49.4	45.8
DEWAS	33.1	33.6	31.7	30.2	32.4	34.3	35.5	35.1	35.8	31.3	35.1	34.3	35.4	35.4	34.7	36.7	32.3	36.1	39.8	41.3	37.0	36.2	42.2	39.0	34.9	36.1	37.8	37.3	40.3	42.1	36.4
MANDIDEEP	15.2	13.6	18.1	26.6	24.0	17.4	17.5	16.5	18.3	13.1	15.0	19.2	16.0	20.9	26.8	46.5	33.7	25.9	23.2	19.8	22.0	17.5	19.2	18.6	19.7	22.2	21.6	19.1	20.6	23.4	18.8
SINGRAULI	15.4	16.9	17.5	17.8	19.0	18.9	15.1	13.7	13.0	14.3	17.1	17.4	15.7	16.6	17.2	17.5	15.1	16.2	15.1	14.9	16.0	16.7	14.6	12.4	13.3	14.2	14.3	13.8	14.5	15.8	16.1

City-wise Comparative Trend of Carbon Monoxide (CO) (March - 2019)

(Based On Raw Data)



	01/03/19	02/03/19	03/03/19	04/03/19	05/03/19	06/03/19	07/03/19	08/03/19	09/03/19	10/03/19	11/03/19	12/03/19	13/03/19	14/03/19	15/03/19	16/03/19	17/03/19	18/03/19	19/03/19	20/03/19	21/03/19	22/03/19	23/03/19	24/03/19	25/03/19	26/03/19	27/03/19	28/03/19	29/03/19	30/03/19	31/03/19	
PITHAMPUR	0.48	0.48	0.36	0.39	0.34	0.42	0.38	0.38	0.31	0.34	0.38	0.30	0.34	0.62	0.34	0.44	0.44	0.43	0.49	0.44	0.44	0.27	0.37	0.45	0.43	0.40	0.42	0.50	0.61	0.49	0.35	0.38
UJJAIN	0.72	0.51	0.45	0.32	0.61	0.91	0.64	0.42	0.75	0.62	0.95	0.78	0.70	0.48	0.50	0.52	0.64	1.23	0.67	0.82	0.57	0.99	1.41	1.04	0.90	0.80	1.22	1.12	0.85	0.81	1.11	
DEWAS	0.37	0.39	0.38	0.51	0.44	0.39	0.39	0.33	0.39	0.54	0.41	0.44	0.34	0.41	0.34	0.43	0.41	0.36	0.38	0.40	0.40	0.40	0.40	0.38	0.39	0.43	0.44	0.45	0.37	0.34	0.39	0.39
MANDIDEEP	0.58	0.44	0.55	0.67	0.62	0.52	0.57	0.57	0.81	0.93	1.25	1.08	0.75	0.90	0.75	0.74	0.62	0.63	0.65	0.89	0.40	0.80	0.72	0.62	0.62	0.60	0.60	0.66	1.05	1.26	0.86	
SINGRAULI	0.46	1.06	1.06	1.01	0.98	1.04	0.72	0.82	0.96	1.03	1.01	1.41	0.85	0.91	0.73	0.98	0.90	1.03	0.96	1.21	1.18	0.80	0.95	0.66	0.62	0.69	1.10	0.91	1.09	0.81	1.24	1.22