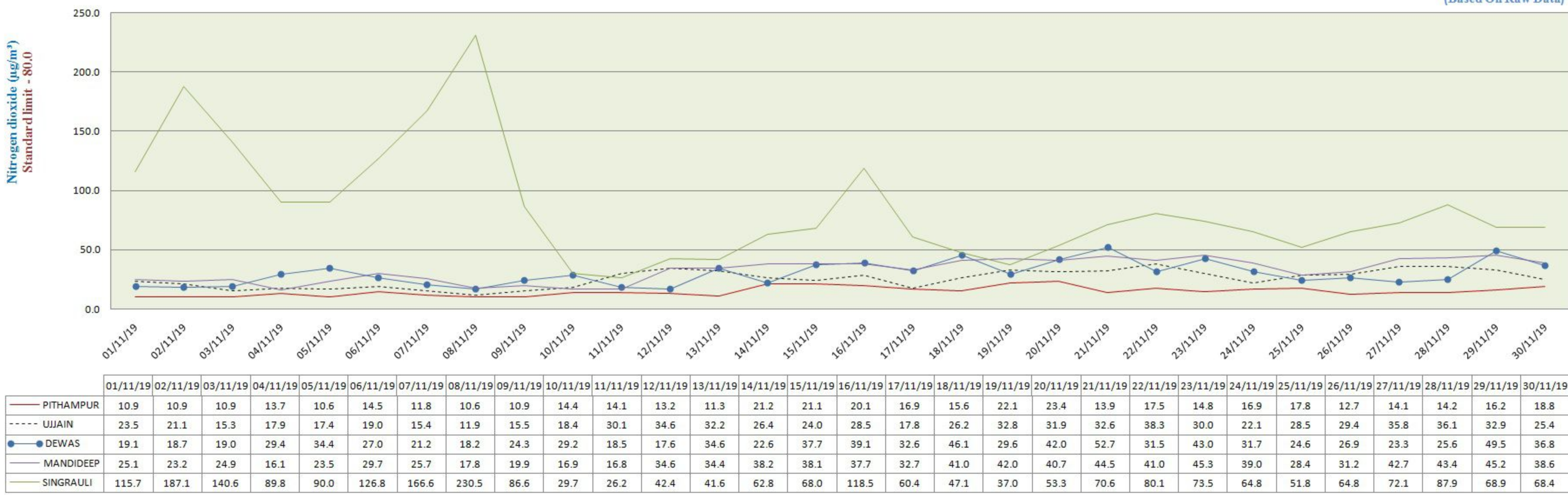


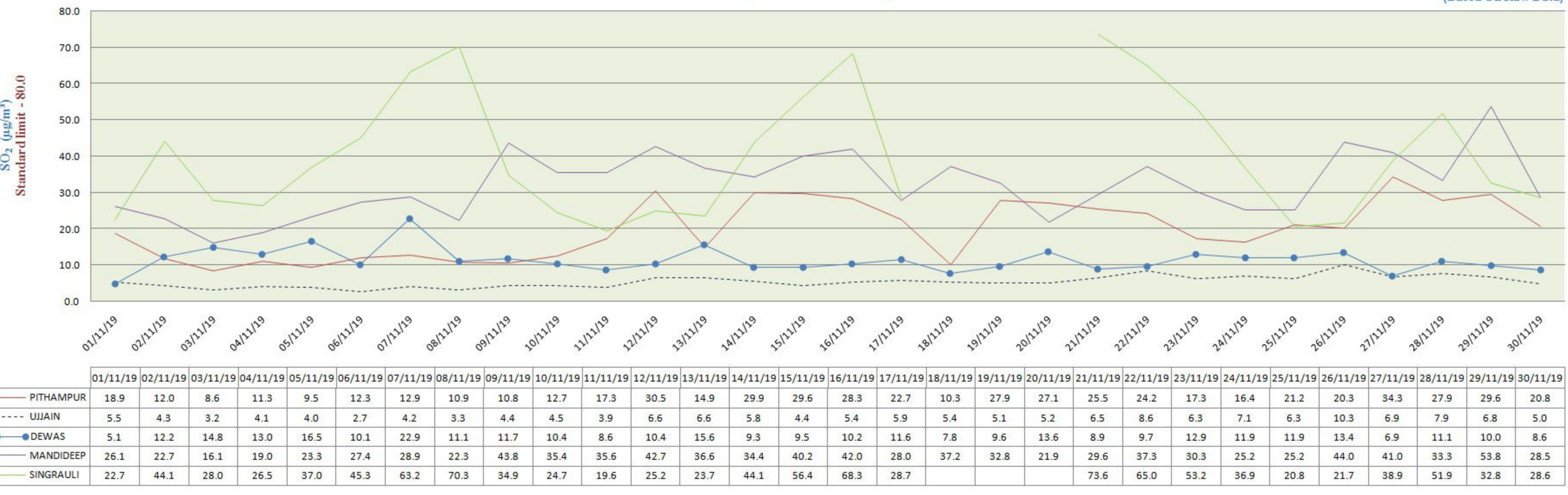
## City-wise Comparative Trend of Nitrogen dioxide (NO<sub>2</sub>) (November - 2019)

(Based On Raw Data)



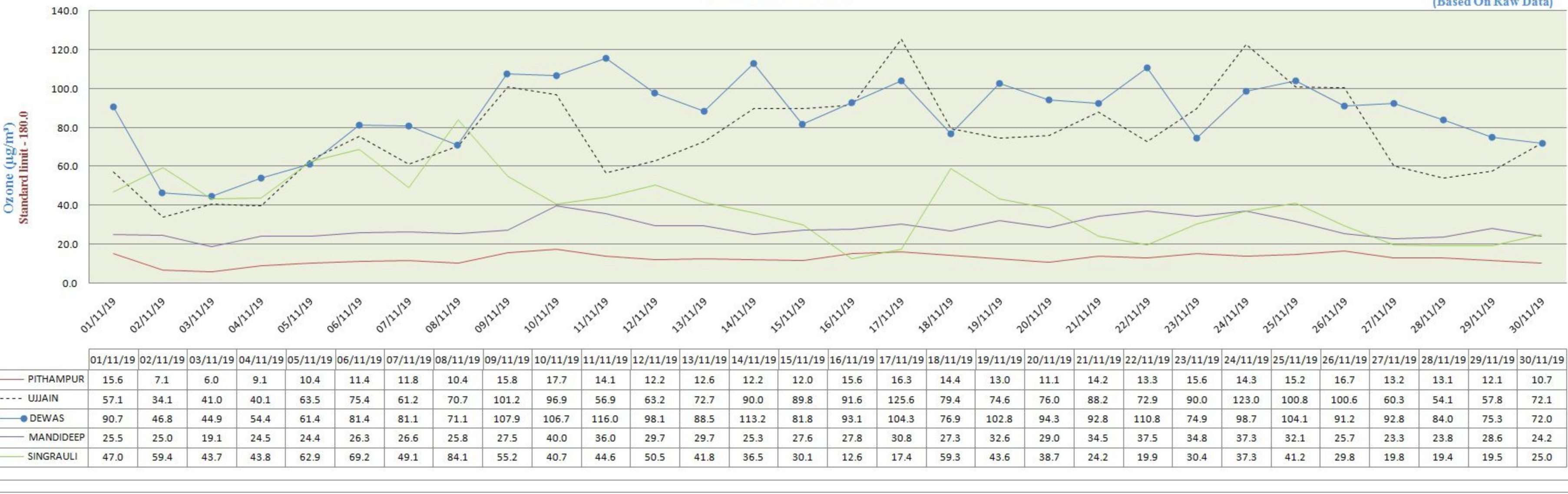
## City-wise Comparative Trend of Sulphur dioxide (SO<sub>2</sub>) (November - 2019)

(Based On Raw Data)



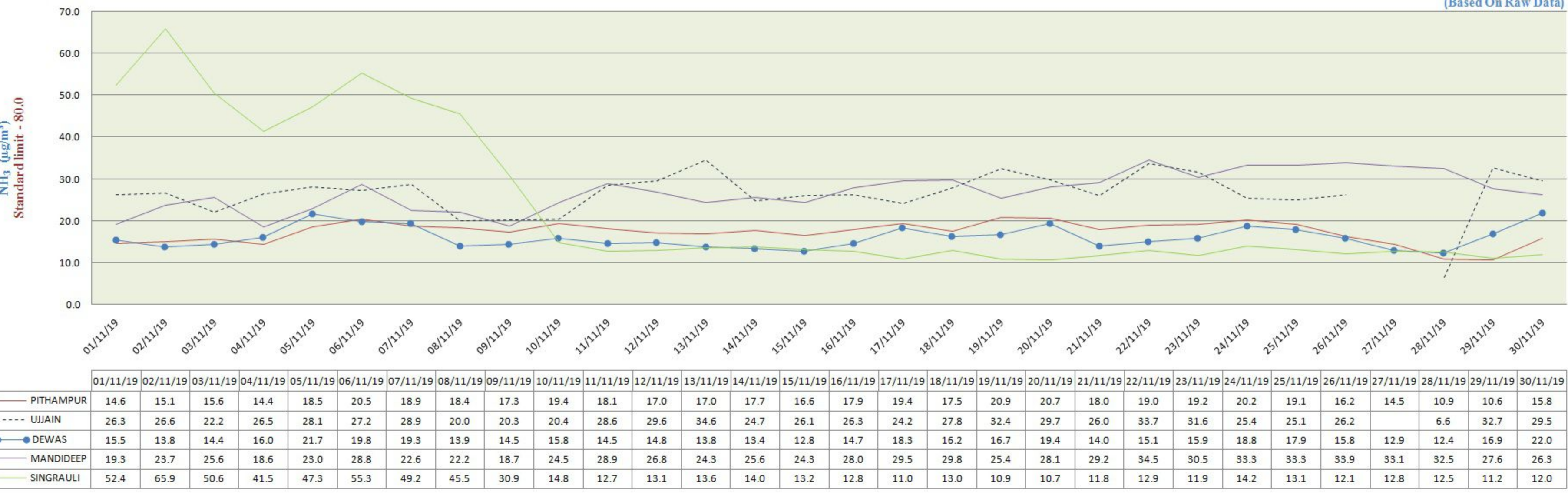
## City-wise Comparative Trend of Ozone (O<sub>3</sub>) (November - 2019)

(Based On Raw Data)



## City-wise Comparative Trend of Ammonia (NH<sub>3</sub>) (November - 2019)

(Based On Raw Data)



## City-wise Comparative Trend of Carbon Monoxide (CO) (November - 2019)

(Based On Raw Data)

