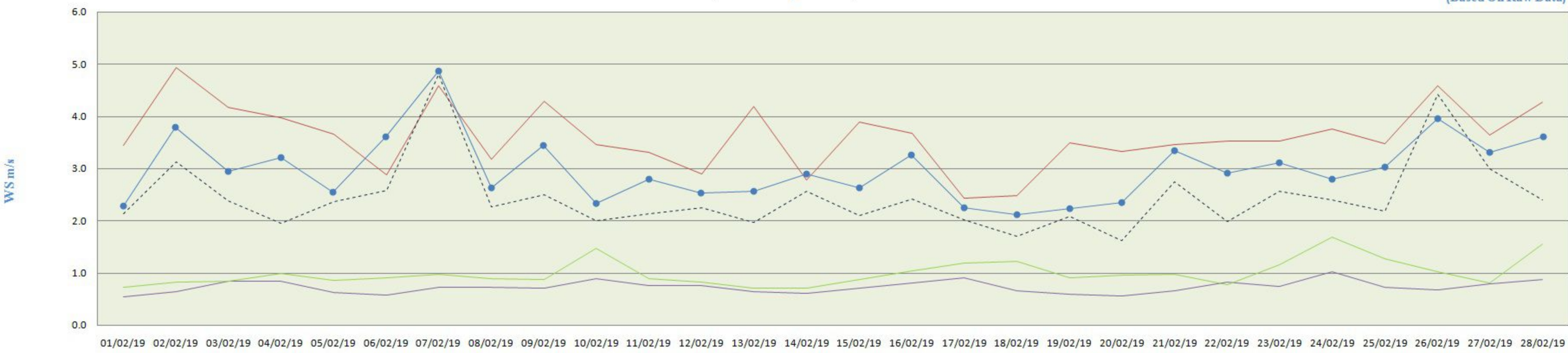


City-wise Comparative Trend of Wind Speed (February-2019)

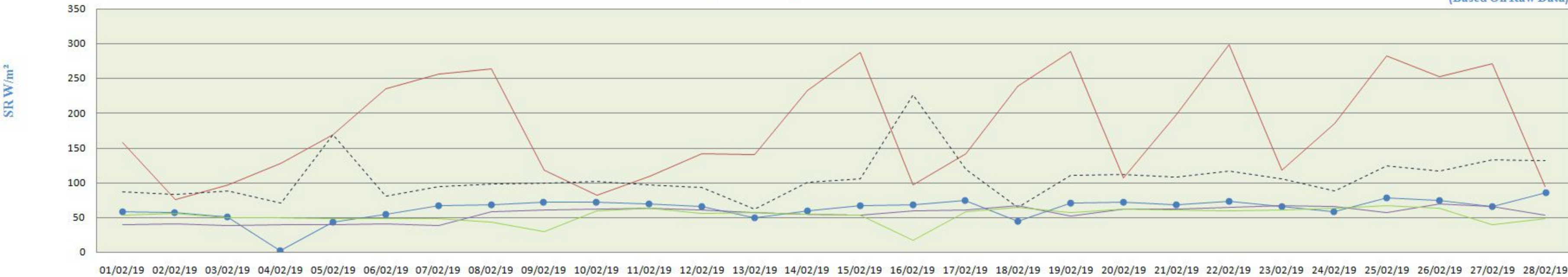
(Based On Raw Data)



	01/02/19	02/02/19	03/02/19	04/02/19	05/02/19	06/02/19	07/02/19	08/02/19	09/02/19	10/02/19	11/02/19	12/02/19	13/02/19	14/02/19	15/02/19	16/02/19	17/02/19	18/02/19	19/02/19	20/02/19	21/02/19	22/02/19	23/02/19	24/02/19	25/02/19	26/02/19	27/02/19	28/02/19
PITHAMPUR	3.4	4.9	4.2	4.0	3.7	2.9	4.6	3.2	4.3	3.5	3.3	2.9	4.2	2.8	3.9	3.7	2.4	2.5	3.5	3.3	3.5	3.5	3.5	3.7	3.5	4.6	3.6	4.3
UJJAIN	2.1	3.1	2.4	2.0	2.4	2.6	4.8	2.3	2.5	2.0	2.1	2.3	2.0	2.6	2.1	2.4	2.0	1.7	2.1	1.6	2.7	2.0	2.6	2.4	2.2	4.4	3.0	2.4
DEWAS	2.3	3.8	2.9	3.2	2.5	3.6	4.9	2.6	3.4	2.3	2.8	2.5	2.6	2.9	2.6	3.2	2.2	2.1	2.2	2.3	3.3	2.9	3.1	2.8	3.0	3.9	3.3	3.6
MANDIDEEP	0.542083	0.640416	0.844583	0.851666	0.629166	0.5825	0.72625	0.719583	0.71625	0.890416	0.760833	0.760416	0.645833	0.602083	0.7075	0.80375	0.914583	0.653333	0.590833	0.565416	0.66375	0.82	0.740833	1.0275	0.73375	0.67125	0.79625	0.873333
SINGRAULI	0.7	0.8	0.9	1.0	0.9	0.9	1.0	0.9	0.9	1.5	0.9	0.8	0.7	0.7	0.9	1.0	1.2	1.2	0.9	1.0	1.0	0.8	1.2	1.7	1.3	1.0	0.8	1.6

City-wise Comparative Trend of Solar Radiations (February-2019)

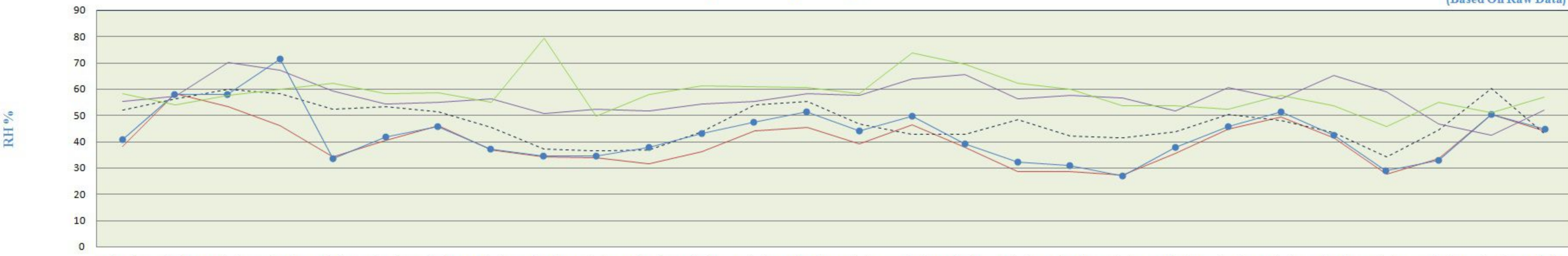
(Based On Raw Data)



	01/02/19	02/02/19	03/02/19	04/02/19	05/02/19	06/02/19	07/02/19	08/02/19	09/02/19	10/02/19	11/02/19	12/02/19	13/02/19	14/02/19	15/02/19	16/02/19	17/02/19	18/02/19	19/02/19	20/02/19	21/02/19	22/02/19	23/02/19	24/02/19	25/02/19	26/02/19	27/02/19	28/02/19
PITHAMPUR	158	76	96	128	169	234	256	264	118	82	110	142	140	232	287	97	142	238	288	107	198	298	119	185	282	252	271	95
UJJAIN	87	83	88	71	169	81	95	98	99	102	97	93	62	101	105	226	119	64	111	112	108	117	106	88	124	117	133	131
DEWAS	58	58	51	2	44	54	67	68	72	72	69	65	50	60	67	69	74	45	70	72	68	74	66	58	78	74	66	86
MANDIDEEP	39	41	38	39	40	41	38	58	61	62	63	61	57	54	53	59	61	67	52	62	62	65	67	65	57	69	65	53
SINGRAULI	54	56	50	49	48	48	49	43	29	60	63	56	57	55	54	16	58	64	57	63	61	60	60	63	67	64	40	49

City-wise Comparative Trend of Relative Humidity (February-2019)

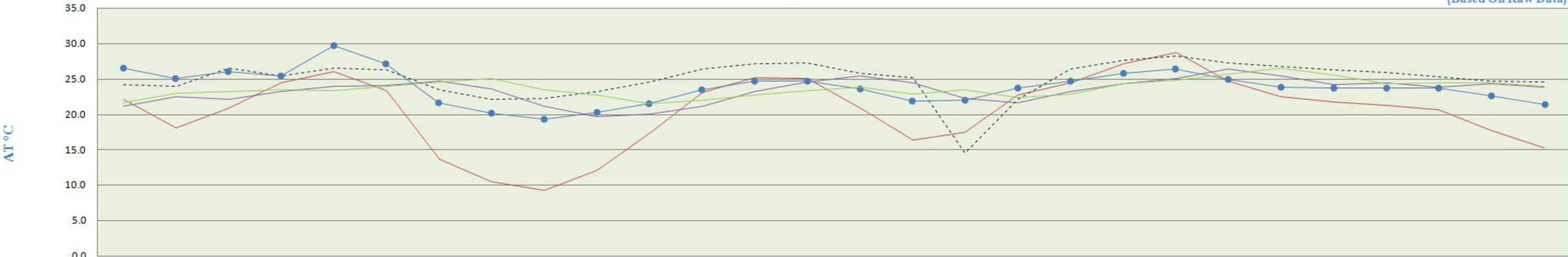
(Based On Raw Data)



	01/02/19	02/02/19	03/02/19	04/02/19	05/02/19	06/02/19	07/02/19	08/02/19	09/02/19	10/02/19	11/02/19	12/02/19	13/02/19	14/02/19	15/02/19	16/02/19	17/02/19	18/02/19	19/02/19	20/02/19	21/02/19	22/02/19	23/02/19	24/02/19	25/02/19	26/02/19	27/02/19	28/02/19	
PITHAMPUR	38	58	53	46	34	40	46	37	34	34	31	36	44	46	39	46	38	28	29	27	35	45	49	41	28	34	34	50	44
UJJAIN	52	56	60	58	52	53	51	45	37	37	37	44	54	55	47	43	43	48	42	41	44	50	48	43	34	44	60	43	
DEWAS	41	58	58	71	33	42	46	37	34	34	37	43	47	51	44	50	39	32	31	27	37	46	51	42	29	33	50	45	
MANDIDEEP	55	57	70	67	59	54	55	56	51	52	52	54	55	58	57	64	65	56	57	57	52	61	56	65	59	47	42	52	
SINGRAULI	58	54	58	60	62	58	59	55	79	50	58	61	61	60	58	74	69	62	60	54	54	52	58	54	46	55	51	57	

City-wise Comparative Trend of Atmospheric temperature (February-2019)

(Based On Raw Data)



	01/02/19	02/02/19	03/02/19	04/02/19	05/02/19	06/02/19	07/02/19	08/02/19	09/02/19	10/02/19	11/02/19	12/02/19	13/02/19	14/02/19	15/02/19	16/02/19	17/02/19	18/02/19	19/02/19	20/02/19	21/02/19	22/02/19	23/02/19	24/02/19	25/02/19	26/02/19	27/02/19	28/02/19
PITHAMPUR	22.1	18.0	20.9	24.5	26.0	23.4	13.7	10.5	9.3	12.1	17.4	23.1	25.2	25.0	20.9	16.4	17.5	22.7	24.5	27.2	28.8	24.7	22.6	21.7	21.3	20.7	17.8	15.3
UJJAIN	24.2	23.9	26.6	25.4	26.6	26.3	23.5	22.2	22.2	23.2	24.6	26.4	27.2	27.2	25.8	25.2	14.5	22.1	26.4	27.6	28.2	27.2	26.7	26.3	25.9	25.3	24.6	24.6
DEWAS	26.5	25.0	26.0	25.4	29.7	27.1	21.6	20.1	19.4	20.2	21.5	23.5	24.7	24.6	23.5	21.8	21.9	23.6	24.7	25.7	26.3	24.9	23.8	23.6	23.6	23.6	22.5	21.3
MANDIDEEP	21.1	22.5	22.1	23.1	23.9	24.0	24.7	23.6	21.2	19.6	20.0	21.1	23.2	24.5	25.4	24.4	22.2	21.6	23.2	24.3	25.1	26.4	25.4	24.1	24.4	23.8	24.3	23.8
SINGRAULI	21.6	23.0	23.2	23.5	23.4	23.9	24.6	25.0	23.5	22.7	21.5	22.1	22.7	23.3	23.8	22.8	23.4	22.4	22.8	24.4	24.8	25.6	26.5	25.5	24.3	24.5	24.4	23.9