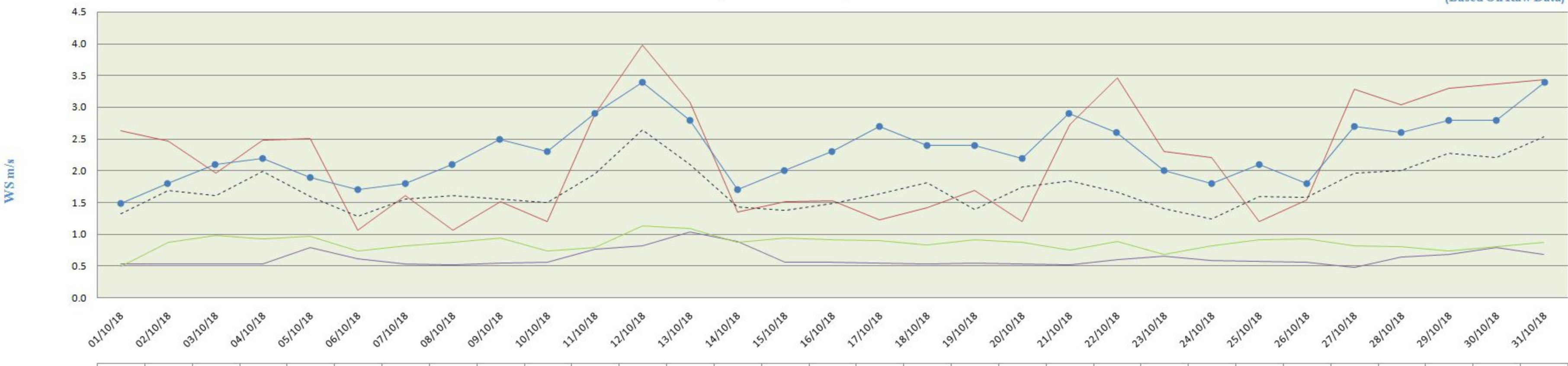


City-wise Comparative Trend of Wind Speed (October 2018)

(Based On Raw Data)



	01/10/18	02/10/18	03/10/18	04/10/18	05/10/18	06/10/18	07/10/18	08/10/18	09/10/18	10/10/18	11/10/18	12/10/18	13/10/18	14/10/18	15/10/18	16/10/18	17/10/18	18/10/18	19/10/18	20/10/18	21/10/18	22/10/18	23/10/18	24/10/18	25/10/18	26/10/18	27/10/18	28/10/18	29/10/18	30/10/18	31/10/18
PITHAMPUR	2.6	2.5	2.0	2.5	2.5	1.1	1.6	1.1	1.5	1.2	2.9	4.0	3.1	1.3	1.5	1.5	1.2	1.4	1.7	1.2	2.7	3.5	2.3	2.2	1.2	1.5	3.3	3.0	3.3	3.4	3.4
UJJAIN	1.3	1.7	1.6	2.0	1.6	1.3	1.6	1.6	1.6	1.5	2.0	2.6	2.1	1.4	1.4	1.5	1.6	1.8	1.4	1.8	1.8	1.7	1.4	1.2	1.6	1.6	2.0	2.0	2.3	2.2	2.5
DEWAS	1.5	1.8	2.1	2.2	1.9	1.7	1.8	2.1	2.5	2.3	2.9	3.4	2.8	1.7	2.0	2.3	2.7	2.4	2.4	2.2	2.9	2.6	2.0	1.8	2.1	1.8	2.7	2.6	2.8	2.8	3.4
MANDIDEEP	0.53708	0.54125	0.53041	0.52958	0.79666	0.61625	0.53375	0.525	0.54916	0.56333	0.76541	0.8175	1.035	0.88958	0.5675	0.55958	0.5525	0.53958	0.54666	0.54125	0.52041	0.59875	0.66291	0.5825	0.57291	0.565	0.48041	0.645	0.68083	0.79583	0.68541
SINGRAULI	0.5	0.9	1.0	0.9	1.0	0.7	0.8	0.9	0.9	0.7	0.8	1.1	1.1	0.9	1.0	0.9	0.9	0.8	0.9	0.9	0.8	0.9	0.7	0.8	0.9	0.9	0.8	0.8	0.7	0.8	0.9

City-wise Comparative Trend of Solar Radiations (October - 2018)

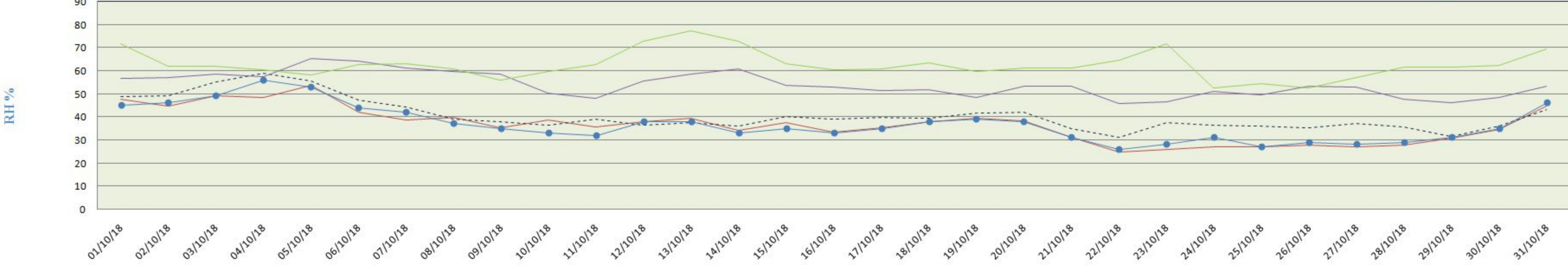
(Based On Raw Data)



	01/10/18	02/10/18	03/10/18	04/10/18	05/10/18	06/10/18	07/10/18	08/10/18	09/10/18	10/10/18	11/10/18	12/10/18	13/10/18	14/10/18	15/10/18	16/10/18	17/10/18	18/10/18	19/10/18	20/10/18	21/10/18	22/10/18	23/10/18	24/10/18	25/10/18	26/10/18	27/10/18	28/10/18	29/10/18	30/10/18	31/10/18
PITHAMPUR	176	193	190	120	128	185	184	222	215	248	161	75	106	163	184	199	240	262	244	231	302	255	201	189	206	153	71	83	65	63	66
UJJAIN	128	124	94	87	120	119	120	116	121	121	105	111	111	109	113	107	111	108	102	106	111	110	108	102	103	107	101	107	105	106	104
DEWAS	87	85	59	57	81	83	78	72	81	72	74	77	77	76	77	73	73	72	71	71	71	75	74	70	73	70	148	73	71	72	71
MANDIDEEP	73	72	70	69	55	71	71	70	65	72	70	66	68	67	65	65	63	56	56	59	60	58	58	56	55	55	54	53	54	56	54
SINGRAULI	6	73	73	70	68	61	67	66	66	61	55	43	42	54	67	66	64	58	61	60	57	55	54	55	63	59	57	57	52	49	41

City-wise Comparative Trend of Relative Humidity (October - 2018)

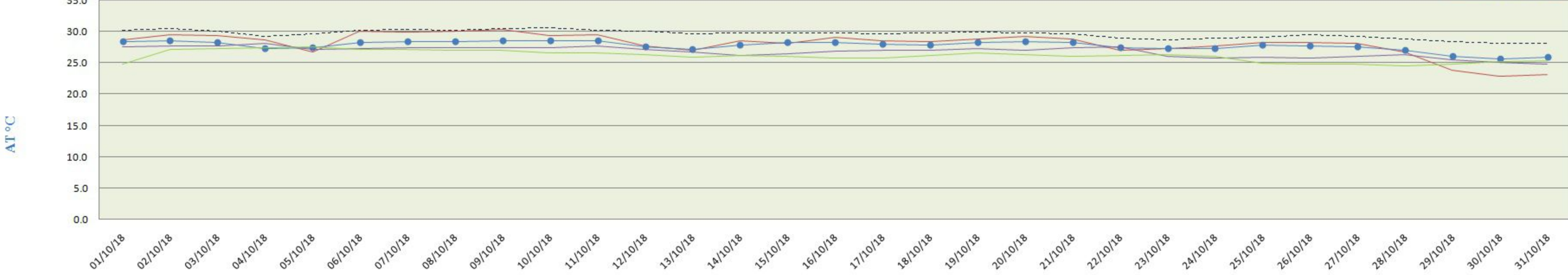
(Based On Raw Data)



	01/10/18	02/10/18	03/10/18	04/10/18	05/10/18	06/10/18	07/10/18	08/10/18	09/10/18	10/10/18	11/10/18	12/10/18	13/10/18	14/10/18	15/10/18	16/10/18	17/10/18	18/10/18	19/10/18	20/10/18	21/10/18	22/10/18	23/10/18	24/10/18	25/10/18	26/10/18	27/10/18	28/10/18	29/10/18	30/10/18	31/10/18
PITHAMPUR	48	45	49	48	54	42	39	40	35	39	36	38	39	34	38	34	35	38	40	39	38	40	38	36	27	28	27	28	31	34	45
UJJAIN	49	49	55	59	56	47	44	39	38	37	39	37	38	36	40	39	42	39	42	42	35	31	38	36	36	35	37	36	32	36	43
DEWAS	45	46	49	56	53	44	42	37	35	33	32	38	38	33	35	33	35	38	39	38	31	26	28	31	27	29	28	29	31	35	46
MANDIDEEP	57	57	58	58	65	64	61	60	59	50	48	55	59	61	54	53	51	52	49	53	53	46	47	51	49	53	53	48	46	49	53
SINGRAULI	72	62	62	61	58	63	63	61	56	60	63	73	77	73	63	61	61	64	60	61	61	65	72	53	54	53	57	62	62	63	70

City-wise Comparative Trend of Atmospheric temperature (October - 2018)

(Based On Raw Data)



	01/10/18	02/10/18	03/10/18	04/10/18	05/10/18	06/10/18	07/10/18	08/10/18	09/10/18	10/10/18	11/10/18	12/10/18	13/10/18	14/10/18	15/10/18	16/10/18	17/10/18	18/10/18	19/10/18	20/10/18	21/10/18	22/10/18	23/10/18	24/10/18	25/10/18	26/10/18	27/10/18	28/10/18	29/10/18	30/10/18	31/10/18
PITHAMPUR	28.7	29.5	29.4	28.8	26.8	30.1	29.9	30.1	30.4	29.3	29.5	27.8	27.0	28.6	28.2	29.1	28.6	28.4	28.9	29.3	28.8	27.0	27.3	27.7	28.3	28.3	28.2	26.7	23.9	22.9	23.2
UJJAIN	30.2	30.4	30.0	29.2	29.6	30.2	30.3	30.2	30.5	30.6	30.1	30.0	29.7	29.7	29.7	29.7	29.6	29.8	29.9	29.8	29.6	28.9	28.7	28.9	29.1	29.5	29.2	28.9	28.5	28.1	28.2
DEWAS	28.4	28.5	28.3	27.3	27.4	28.3	28.4	28.4	28.6	28.6	28.5	27.5	27.2	27.8	28.3	28.3	28.0	27.9	28.2	28.4	28.2	27.4	27.3	27.3	27.9	27.7	27.6	27.0	26.1	25.7	25.9
MANDIDEEP	27.5	27.6	27.7	28.1	27.1	27.3	27.4	27.4	27.4	27.5	27.6	27.1	26.7	26.2	26.4	26.8	26.9	27.0	27.3	27.1	27.4	27.6	26.0	25.7	25.9	25.8	26.0	26.2	25.5	25.0	24.8
SINGRAULI	24.9	27.1	27.3	27.4	27.6	27.2	27.2	27.0	27.0	26.6	26.6	26.3	26.0	26.2	26.1	25.8	25.8	26.2	26.7	26.3	26.0	26.2	26.4	26.1	25.0	24.8	24.8	24.6	24.9	25.3	25.4