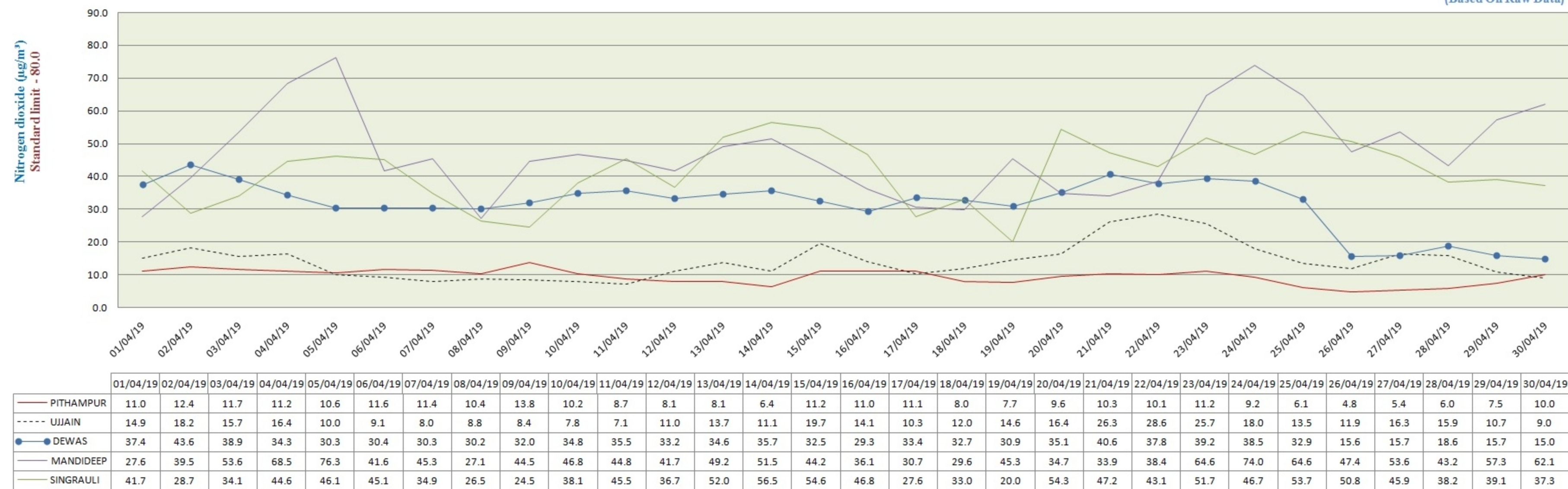


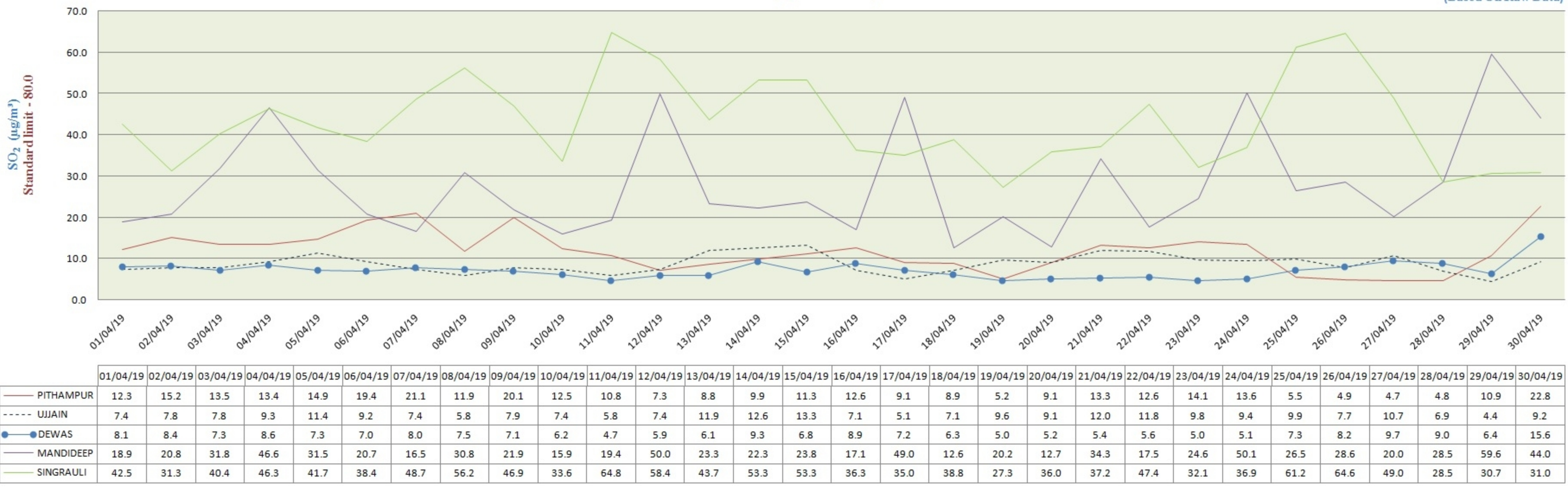
**City-wise Comparative Trend of Nitrogen dioxide (NO₂)
(April - 2019)**

(Based On Raw Data)



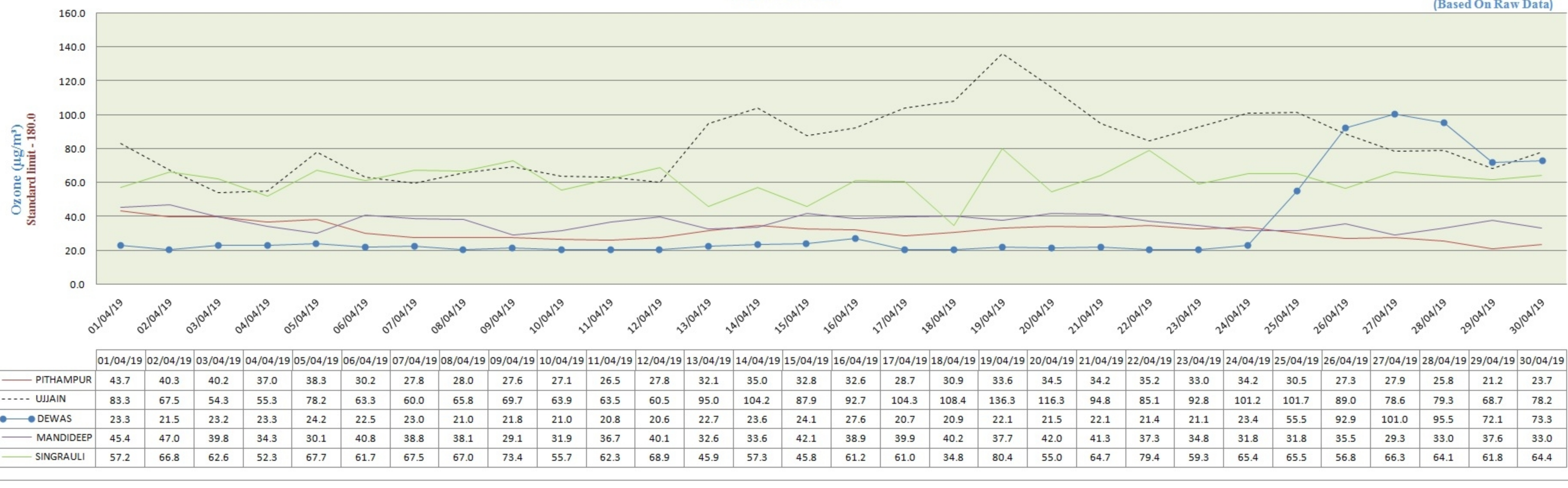
**City-wise Comparative Trend of Sulphur dioxide (SO₂)
(April - 2019)**

(Based On Raw Data)



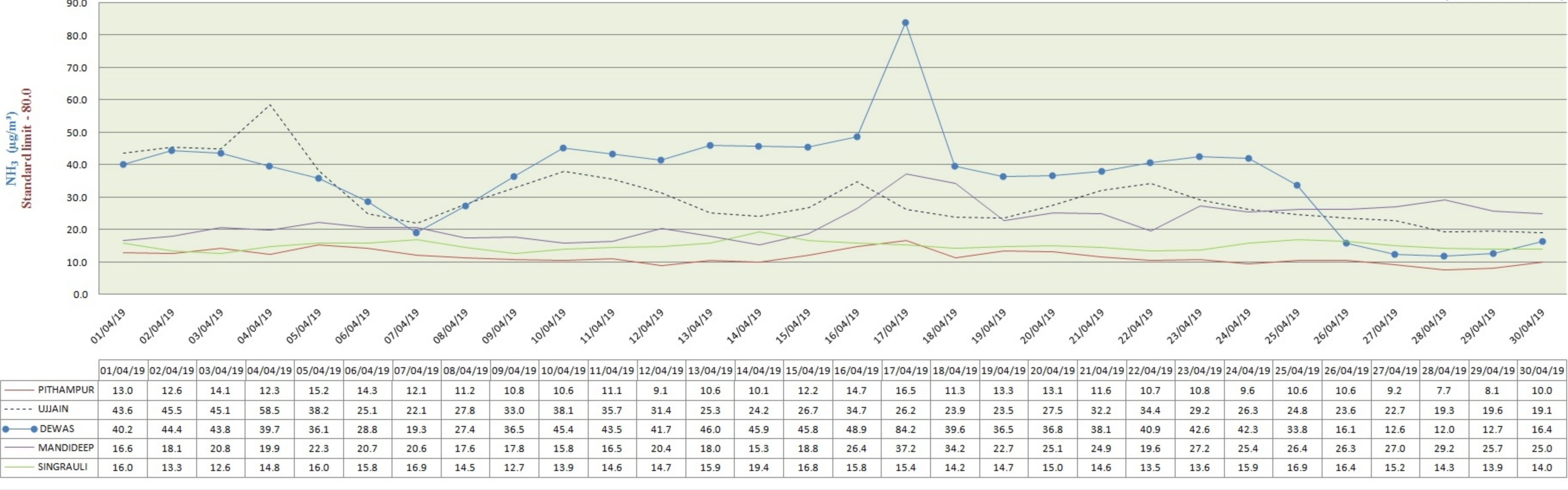
**City-wise Comparative Trend of Ozone (O₃)
(April - 2019)**

(Based On Raw Data)



**City-wise Comparative Trend of Ammonia (NH₃)
(April - 2019)**

(Based On Raw Data)



**City-wise Comparative Trend of Carbon Monoxide (CO)
(April - 2019)**

(Based On Raw Data)

