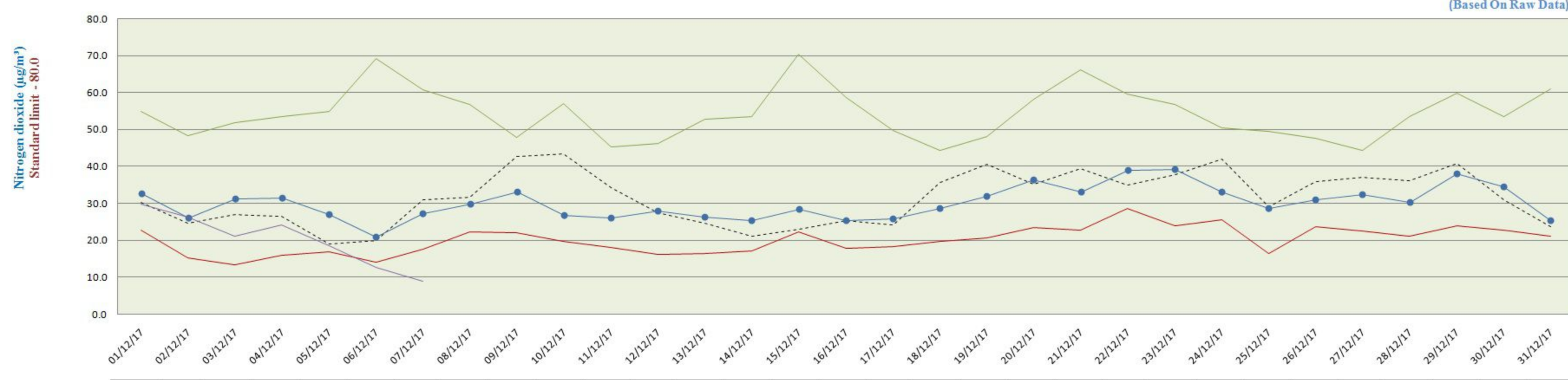


City-wise Comparative Trend of Nitrogen dioxide (NO₂) (December- 2017)

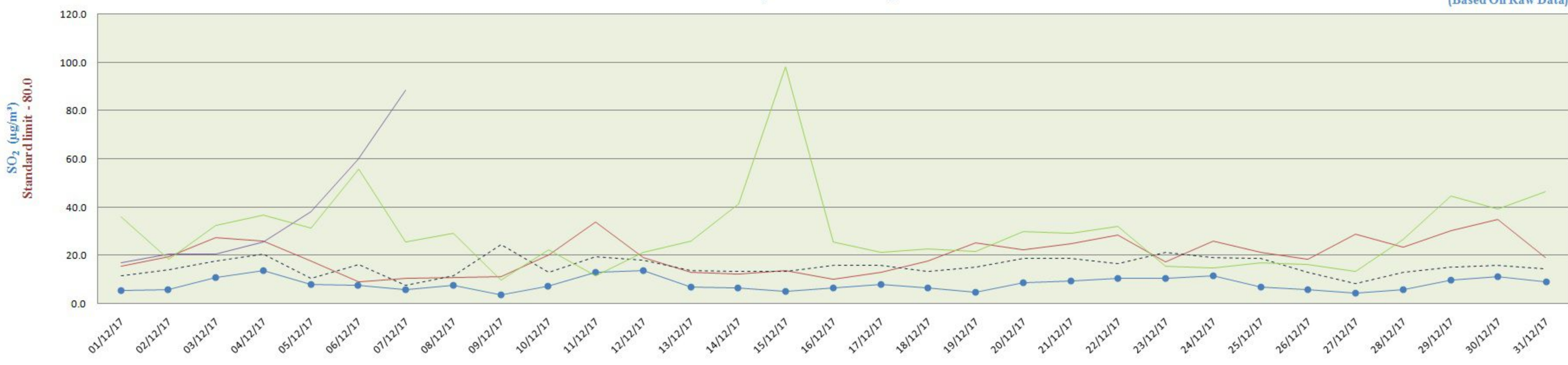
(Based On Raw Data)



	01/12/17	02/12/17	03/12/17	04/12/17	05/12/17	06/12/17	07/12/17	08/12/17	09/12/17	10/12/17	11/12/17	12/12/17	13/12/17	14/12/17	15/12/17	16/12/17	17/12/17	18/12/17	19/12/17	20/12/17	21/12/17	22/12/17	23/12/17	24/12/17	25/12/17	26/12/17	27/12/17	28/12/17	29/12/17	30/12/17	31/12/17	
PITHAMPUR	22.8	15.4	13.4	16.1	16.9	14.0	17.7	22.3	22.1	19.6	18.0	16.3	16.5	17.1	22.3	17.8	18.3	19.7	20.6	23.5	22.8	28.6	23.9	25.5	16.6	23.7	22.6	21.1	23.9	22.7	21.0	
UJJAIN	30.3	24.7	27.0	26.4	19.0	20.0	30.9	31.7	42.5	43.3	34.1	27.5	24.6	21.1	23.0	25.4	24.2	35.7	40.5	35.1	39.4	34.9	37.6	41.9	29.1	35.8	37.0	36.0	40.6	31.0	23.7	
DEWAS	32.6	26.0	31.2	31.5	26.9	20.9	27.2	29.6	33.1	26.6	26.0	27.9	26.3	25.3	28.4	25.2	25.7	28.5	31.8	36.4	33.1	39.0	39.2	33.1	28.6	30.9	32.3	30.2	38.0	34.5	25.4	
MANDIDEEP	29.9	26.3	21.2	24.3	18.7	12.7	9.0																									
SINGRAULI	54.8	48.3	51.8	53.5	54.8	69.2	60.6	56.7	48.0	57.0	45.3	46.2	52.8	53.5	70.3	58.7	49.8	44.4	48.2	58.0	66.2	59.5	56.8	50.5	49.4	47.5	44.4	53.6	59.9	53.4	60.8	

City-wise Comparative Trend of Sulphur dioxide (SO₂) (December- 2017)

(Based On Raw Data)



	01/12/17	02/12/17	03/12/17	04/12/17	05/12/17	06/12/17	07/12/17	08/12/17	09/12/17	10/12/17	11/12/17	12/12/17	13/12/17	14/12/17	15/12/17	16/12/17	17/12/17	18/12/17	19/12/17	20/12/17	21/12/17	22/12/17	23/12/17	24/12/17	25/12/17	26/12/17	27/12/17	28/12/17	29/12/17	30/12/17	31/12/17	
PITHAMPUR	15.7	19.5	27.7	26.0	18.0	9.2	10.8	10.9	11.2	20.3	33.9	19.4	13.1	12.4	13.9	10.2	13.2	18.0	25.4	22.6	24.9	28.8	17.6	26.2	21.4	18.7	28.9	23.6	30.6	35.1	19.4	
UJJAIN	11.7	14.1	17.7	20.4	10.5	16.4	7.6	11.5	24.5	13.1	19.3	18.0	13.6	13.5	13.2	15.9	15.8	13.4	15.0	18.9	18.8	16.7	21.4	19.0	18.9	13.1	8.4	13.1	15.0	15.7	14.3	
DEWAS	5.3	5.6	10.9	13.6	7.9	7.4	5.8	7.4	3.8	7.4	12.9	13.9	6.7	6.4	5.0	6.6	7.8	6.5	4.9	8.6	9.3	10.6	10.6	11.4	6.7	5.7	4.2	5.8	9.6	11.3	9.1	
MANDIDEEP	17.0	20.7	20.8	25.8	38.2	59.9	88.7																									
SINGRAULI	35.8	18.2	32.3	36.7	31.4	55.9	25.4	28.9	9.7	22.2	11.5	21.3	25.9	41.4	98.2	25.4	21.2	22.7	21.4	30.0	29.2	32.0	15.3	14.6	16.8	16.2	13.3	26.5	44.7	39.2	46.2	

City-wise Comparative Trend of Ozone (O₃) (December-2017)

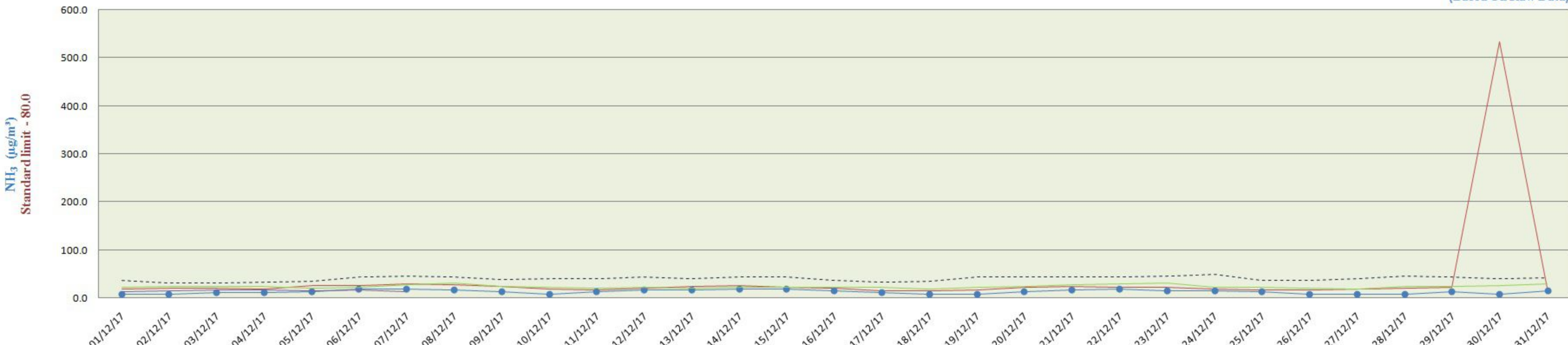
(Based On Raw Data)



	01/12/17	02/12/17	03/12/17	04/12/17	05/12/17	06/12/17	07/12/17	08/12/17	09/12/17	10/12/17	11/12/17	12/12/17	13/12/17	14/12/17	15/12/17	16/12/17	17/12/17	18/12/17	19/12/17	20/12/17	21/12/17	22/12/17	23/12/17	24/12/17	25/12/17	26/12/17	27/12/17	28/12/17	29/12/17	30/12/17	31/12/17	
PITHAMPUR	113.6	126.5	134.8	131.4	90.5	81.9	78.6	91.7	91.6	89.2	96.2	97.4	88.2	77.7	71.9	76.7	84.1	77.6	83.1	82.1	100.3	98.0	95.5	110.5	102.2	90.6	97.0	104.5	112.7	127.4	107.3	
UJJAIN	40.0	46.6	47.2	49.3	49.2	68.3	59.5	94.6	89.1	54.3	65.0	74.2	72.8	82.0	86.0	87.4	90.1	75.5	58.0	79.1	86.2	106.2	76.9	68.9	100.8	73.7	68.4	68.1	79.4	104.4	92.6	
DEWAS	30.1	32.2	32.7	34.0	27.5	53.3	74.4	87.3	77.8	81.0	79.2	73.7	67.9	66.0	62.3	73.6	75.3	72.3	74.0	69.9	89.0	91.0	85.2	94.1	86.1	82.5	83.2	90.9	89.8	96.2	88.7	
MANDIDEEP	62.6	76.6	80.8	82.1	93.6	101.4	84.0																									
SINGRAULI	25.2	38.0	35.6	37.8	42.3	40.1	42.5	54.7	48.9	46.2	52.0	41.3	23.6	24.4	14.5	20.4	24.7	17.9	15.8	13.4	16.6	13.0	14.3	17.0	15.6	16.9	14.9	13.9	11.3	15.3	11.7	

City-wise Comparative Trend of Ammonia (NH₃) (December-2017)

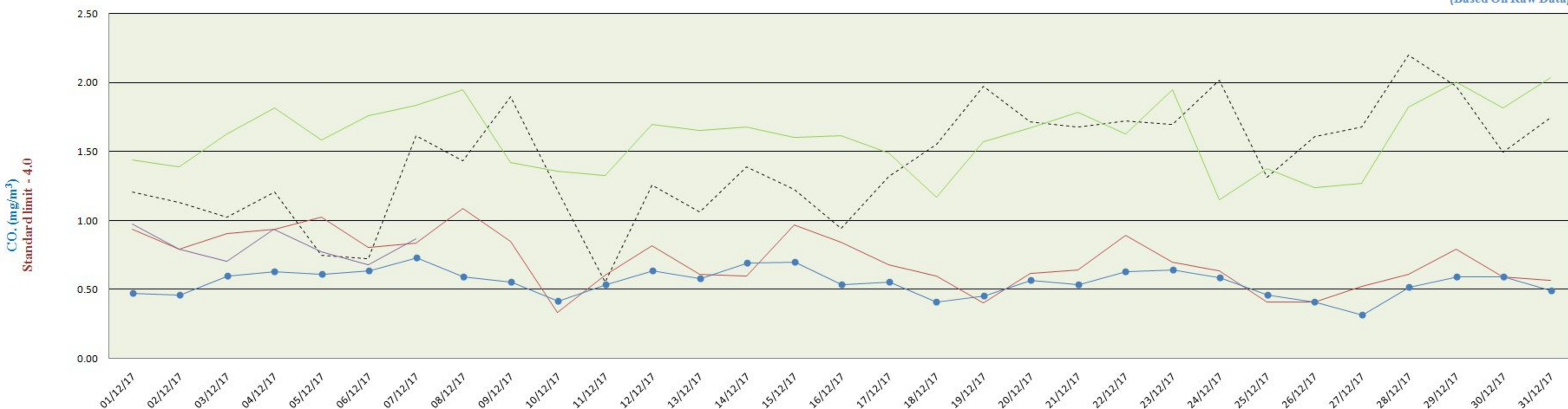
(Based On Raw Data)



	01/12/17	02/12/17	03/12/17	04/12/17	05/12/17	06/12/17	07/12/17	08/12/17	09/12/17	10/12/17	11/12/17	12/12/17	13/12/17	14/12/17	15/12/17	16/12/17	17/12/17	18/12/17	19/12/17	20/12/17	21/12/17	22/12/17	23/12/17	24/12/17	25/12/17	26/12/17	27/12/17	28/12/17	29/12/17	30/12/17	31/12/17	
PITHAMPUR	20.1	20.8	21.0	20.1	25.9	26.2	30.4	27.9	24.7	19.1	16.8	20.7	24.8	26.5	23.7	20.9	15.9	16.3	17.4	22.9	24.5	22.8	22.6	20.0	17.8	18.0	19.9	21.4	22.8	533.5	22.0	
UJJAIN	36.9	30.6	31.2	32.0	34.3	43.3	46.7	44.2	39.0	39.3	41.2	44.4	40.8	44.6	43.4	37.1	31.9	34.2	43.7	44.8	44.6	44.2	46.3	49.9	35.7	36.4	39.9	45.2	43.7	40.3	42.2	
DEWAS	10.4	9.8	11.5	11.5	14.5	20.4	19.3	16.9	14.5	9.3	13.8	18.0	17.3	19.4	18.9	15.8	12.5	10.3	10.1	14.4	16.8	18.8	16.6	15.3	14.3	10.1	10.2	11.1	13.6	10.7	15.4	
MANDIDEEP	13.5	16.6	17.5	17.8	16.5	17.2	13.0																									
SINGRAULI	23.5	24.1	24.7	24.7	21.2	23.6	27.5	31.1	25.1	22.4	21.3	22.2	20.5	23.4	23.1	23.0	22.1	19.6	22.7	23.9	27.3	30.5	31.4	22.7	22.2	20.5	20.4	24.7	24.6	26.7	30.1	

City-wise Comparative Trend of Carbon Monoxide (CO) (December-2017)

(Based On Raw Data)



	01/12/17	02/12/17	03/12/17	04/12/17	05/12/17	06/12/17	07/12/17	08/12/17	09/12/17	10/12/17	11/12/17	12/12/17	13/12/17	14/12/17	15/12/17	16/12/17	17/12/17	18/12/17	19/12/17	20/12/17	21/12/17	22/12/17	23/12/17	24/12/17	25/12/17	26/12/17	27/12/17	28/12/17	29/12/17	30/12/17	31/12/17	
PITHAMPUR	0.94	0.79	0.90	0.94	1.02	0.80	0.84	1.09	0.85	0.33	0.60	0.82	0.61	0.60	0.97	0.68	0.60	0.40	0.62	0.64	0.89	0.70	0.64	0.64	0.41	0.41	0.52	0.61	0.80	0.59	0.57	
UJJAIN	1.21	1.13	1.03	1.21	0.75	0.73	1.44	1.90	1.22	0.56	1.26	1.06	1.06	1.39	1.23	0.95	1.32	1.55	1.98	1.72	1.68	1.72	1.70	2.02	1.32	1.61	1.68	2.20	1.98	1.50	1.75	
DEWAS	0.47	0.46	0.60	0.63	0.61	0.64	0.73	0.59	0.55	0.42	0.53	0.64	0.58	0.69	0.70	0.54	0.55	0.41	0.45	0.57	0.53	0.63	0.64	0.59	0.46	0.41	0.32	0.51	0.59	0.59	0.49	
MANDIDEEP	0.97	0.79	0.70	0.93	0.77	0.68	0.87																									
SINGRAULI	1.44	1.39	1.63	1.82	1.58	1.76	1.83	1.95	1.42	1.36	1.33	1.70	1.65	1.68	1.60	1.62	1.49	1.17	1.57	1.67	1.78	1.63	1.94	1.15	1.38	1.24	1.27	1.82	2.00	1.81	2.03	