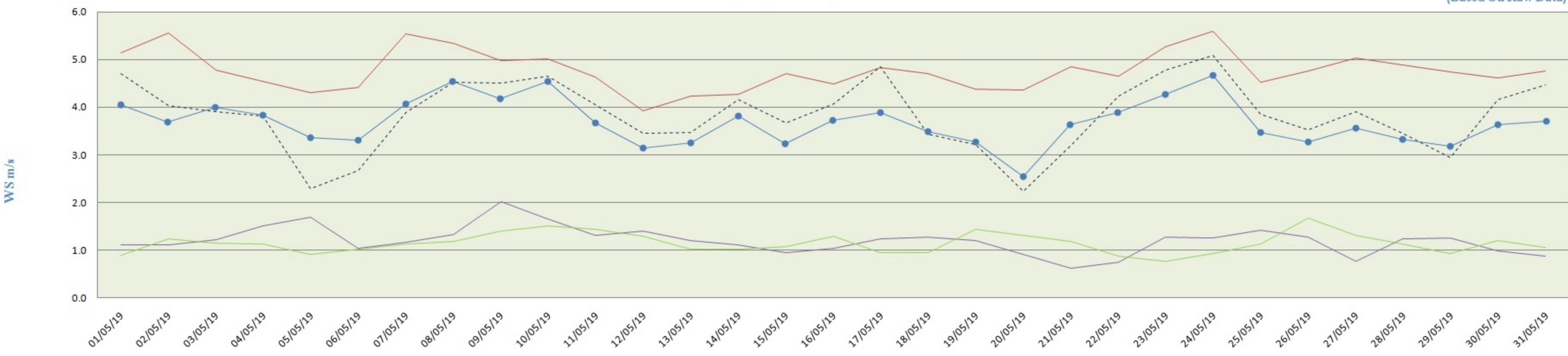


City-wise Comparative Trend of Wind Speed (May - 2019)

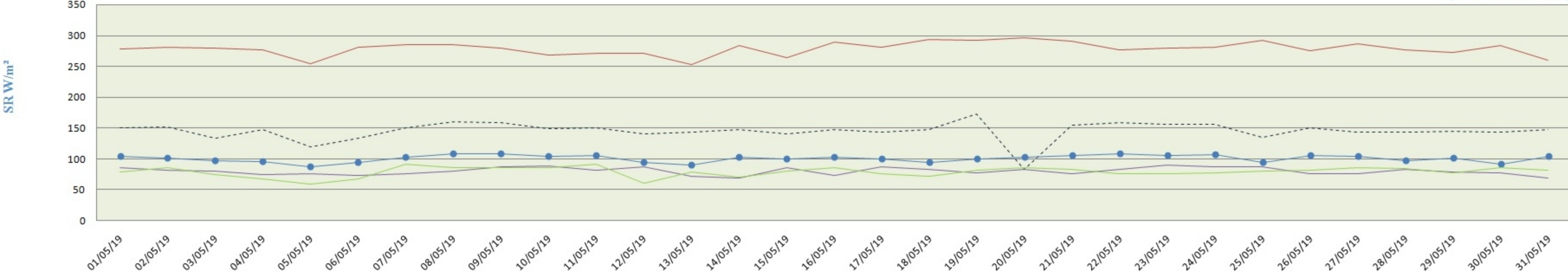
(Based On Raw Data)



	01/05/19	02/05/19	03/05/19	04/05/19	05/05/19	06/05/19	07/05/19	08/05/19	09/05/19	10/05/19	11/05/19	12/05/19	13/05/19	14/05/19	15/05/19	16/05/19	17/05/19	18/05/19	19/05/19	20/05/19	21/05/19	22/05/19	23/05/19	24/05/19	25/05/19	26/05/19	27/05/19	28/05/19	29/05/19	30/05/19	31/05/19
PITHAMPUR	5.1	5.6	4.8	4.5	4.3	4.4	5.5	5.3	5.0	5.0	4.6	3.9	4.2	4.3	4.7	4.5	4.8	4.7	4.4	4.4	4.8	4.7	5.3	5.6	4.5	4.8	5.0	4.9	4.7	4.6	4.8
UJJAIN	4.7	4.0	3.9	3.8	2.3	2.7	3.9	4.5	4.5	4.7	4.1	3.4	3.5	4.2	3.7	4.1	4.8	3.4	3.2	2.2	3.2	4.2	4.8	5.1	3.8	3.5	3.9	3.5	2.9	4.2	4.5
DEWAS	4.1	3.7	4.0	3.8	3.4	3.3	4.1	4.5	4.2	4.6	3.7	3.1	3.3	3.8	3.3	3.7	3.9	3.5	3.3	2.5	3.6	3.9	4.3	4.7	3.5	3.3	3.6	3.3	3.2	3.6	3.7
MANDIDEEP	1.10291	1.11333	1.21333	1.52041	1.68875	1.03833	1.16166	1.33208	2.0275	1.66	1.31083	1.41166	1.19958	1.10333	0.94958	1.04458	1.24666	1.27791	1.20125	0.91541	0.61458	0.75125	1.2775	1.25208	1.41666	1.2825	0.76875	1.24	1.25791	0.98291	0.88041
SINGRAULI	0.9	1.2	1.2	1.1	0.9	1.0	1.1	1.2	1.4	1.5	1.5	1.3	1.0	1.0	1.1	1.3	1.0	1.0	1.4	1.3	1.2	0.9	0.8	0.9	1.1	1.7	1.3	1.1	0.9	1.2	1.1

City-wise Comparative Trend of Solar Radiations (May - 2019)

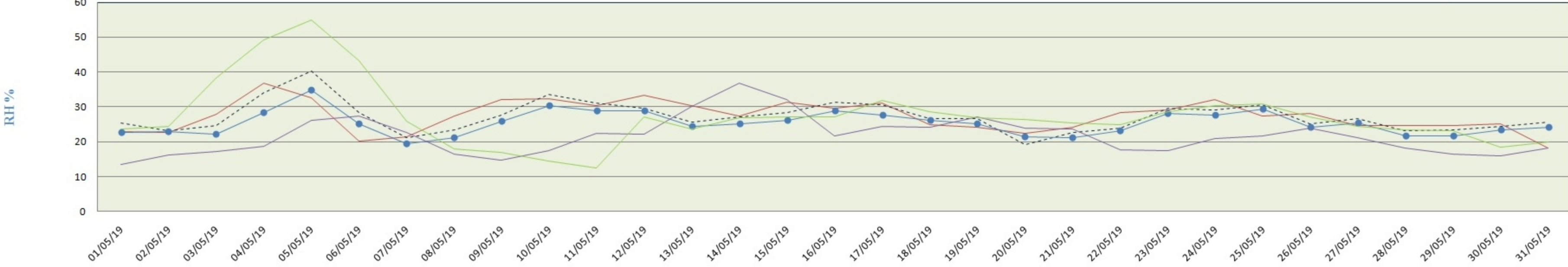
(Based On Raw Data)



	01/05/19	02/05/19	03/05/19	04/05/19	05/05/19	06/05/19	07/05/19	08/05/19	09/05/19	10/05/19	11/05/19	12/05/19	13/05/19	14/05/19	15/05/19	16/05/19	17/05/19	18/05/19	19/05/19	20/05/19	21/05/19	22/05/19	23/05/19	24/05/19	25/05/19	26/05/19	27/05/19	28/05/19	29/05/19	30/05/19	31/05/19
PITHAMPUR	277	280	280	277	254	281	285	285	280	267	271	271	252	283	263	289	280	293	292	296	291	277	279	280	291	275	287	276	272	283	259
UJJAIN	151	152	133	147	120	133	150	160	159	150	151	140	144	147	141	147	143	147	173	84	155	159	156	156	136	151	143	144	145	144	148
DEWAS	104	102	97	96	88	95	103	109	109	105	106	95	91	103	101	103	100	95	100	103	106	109	106	108	95	106	105	98	101	92	105
MANDIDEEP	85	82	80	75	76	74	76	80	87	88	82	87	73	70	85	73	87	82	77	83	76	83	90	87	87	76	77	83	79	78	70
SINGRAULI	79	86	75	68	60	68	91	87	86	86	91	62	80	72	81	86	77	72	82	86	84	77	77	78	81	82	86	85	77	86	82

City-wise Comparative Trend of Relative Humidity (May - 2019)

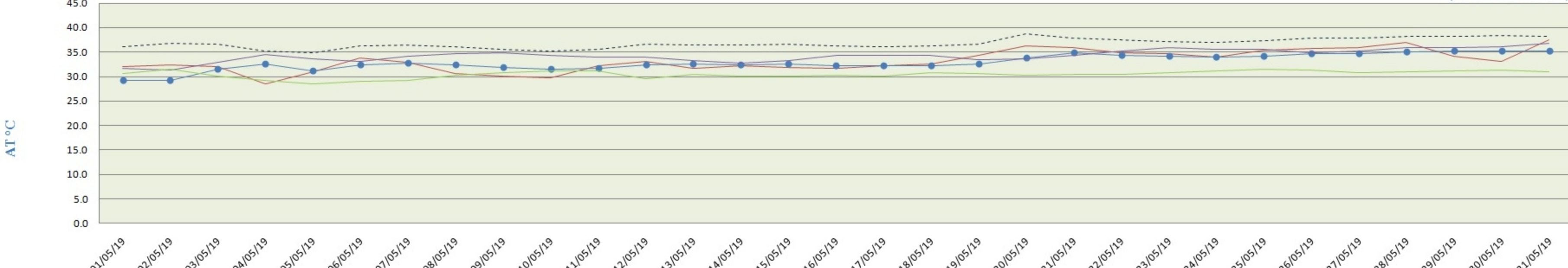
(Based On Raw Data)



	01/05/19	02/05/19	03/05/19	04/05/19	05/05/19	06/05/19	07/05/19	08/05/19	09/05/19	10/05/19	11/05/19	12/05/19	13/05/19	14/05/19	15/05/19	16/05/19	17/05/19	18/05/19	19/05/19	20/05/19	21/05/19	22/05/19	23/05/19	24/05/19	25/05/19	26/05/19	27/05/19	28/05/19	29/05/19	30/05/19	31/05/19
PITHAMPUR	23	23	28	37	33	20	21	27	32	32	30	33	30	27	31	29	31	25	24	22	24	28	29	32	27	28	24	25	25	25	18
UJJAIN	26	23	25	34	40	28	21	24	28	34	31	30	26	27	29	32	31	27	27	19	23	24	30	29	31	25	27	23	24	25	26
DEWAS	23	23	22	28	35	25	20	21	26	30	29	29	24	25	26	29	28	26	25	22	21	23	28	28	29	24	25	22	22	24	24
MANDIDEEP	14	16	17	19	26	27	23	17	15	18	22	22	30	37	32	22	24	24	27	24	24	18	17	21	22	24	21	18	17	16	18
SINGRAULI	24	24	38	49	55	43	26	18	17	14	12	27	24	27	27	27	32	29	27	26	25	25	29	30	31	27	24	23	23	18	20

City-wise Comparative Trend of Atmospheric temperature (May - 2019)

(Based On Raw Data)



	01/05/19	02/05/19	03/05/19	04/05/19	05/05/19	06/05/19	07/05/19	08/05/19	09/05/19	10/05/19	11/05/19	12/05/19	13/05/19	14/05/19	15/05/19	16/05/19	17/05/19	18/05/19	19/05/19	20/05/19	21/05/19	22/05/19	23/05/19	24/05/19	25/05/19	26/05/19	27/05/19	28/05/19	29/05/19	30/05/19	31/05/19
PITHAMPUR	32.0	32.5	32.0	28.6	31.1	33.8	32.8	30.6	30.2	29.7	32.2	33.1	31.7	32.3	31.9	31.8	32.3	32.6	34.3	36.2	35.8	34.9	34.7	33.9	35.3	35.7	35.9	36.9	34.2	33.1	37.5
UJJAIN	36.1	36.8	36.7	35.3	34.9	36.3	36.5	36.1	35.7	35.3	35.6	36.6	36.5	36.5	36.6	36.2	36.1	36.2	36.6	38.7	37.8	37.5	37.2	37.0	37.4	37.9	37.8	38.2	38.3	38.4	38.3
DEWAS	29.4	29.4	31.5	32.7	31.3	32.5	32.8	32.4	31.9	31.6	31.8	32.5	32.7	32.5	32.7	32.2	32.3	32.2	32.6	33.9	34.9	34.5	34.2	34.1	34.2	34.8	34.8	35.1	35.3	35.4	35.3
MANDIDEEP	31.8	31.4	33.0	34.6	33.7	33.1	34.3	34.7	34.9	34.3	34.0	34.1	33.3	32.9	33.3	34.5	34.5	34.4	33.5	33.7	34.3	35.4	36.0	35.6	35.6	35.0	35.3	35.9	35.9	36.2	36.9
SINGRAULI	30.6	31.5	30.0	29.2	28.4	28.9	29.2	30.2	30.7	31.1	31.2	29.5	30.5	30.0	30.0	30.3	30.0	30.7	30.5	30.3	30.4	30.4	30.8	31.2	31.5	31.3	30.7	30.9	31.1	31.4	31.0