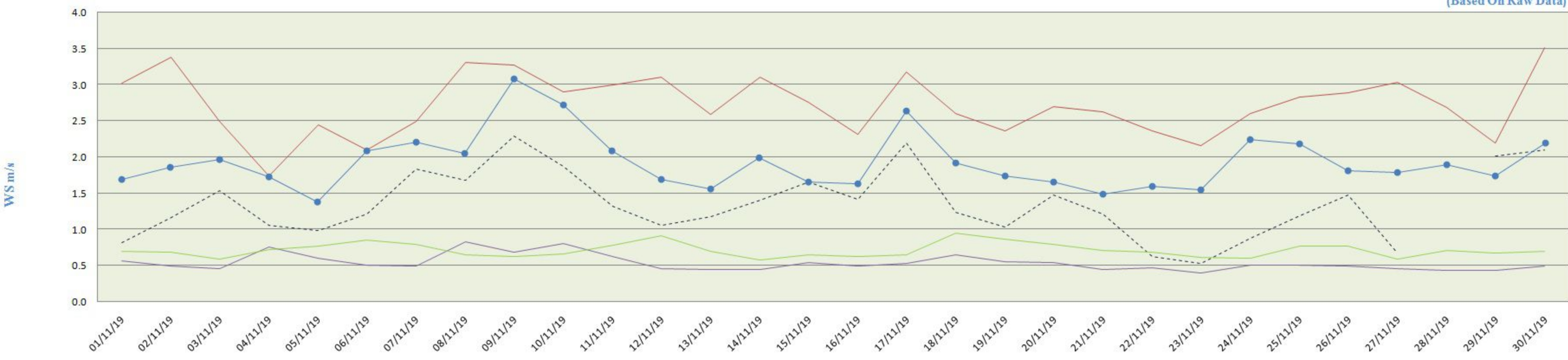


### City-wise Comparative Trend of Wind Speed (November 2019)

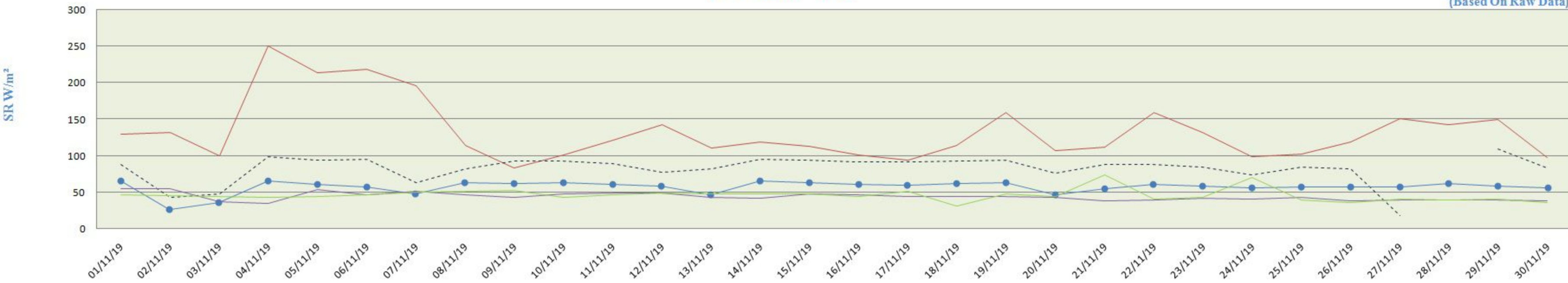
(Based On Raw Data)



	01/11/19	02/11/19	03/11/19	04/11/19	05/11/19	06/11/19	07/11/19	08/11/19	09/11/19	10/11/19	11/11/19	12/11/19	13/11/19	14/11/19	15/11/19	16/11/19	17/11/19	18/11/19	19/11/19	20/11/19	21/11/19	22/11/19	23/11/19	24/11/19	25/11/19	26/11/19	27/11/19	28/11/19	29/11/19	30/11/19
PITHAMPUR	3.0	3.4	2.5	1.7	2.5	2.1	2.5	3.3	3.3	2.9	3.0	3.1	2.6	3.1	2.8	2.3	3.2	2.6	2.4	2.7	2.6	2.4	2.2	2.6	2.8	2.9	3.0	2.7	2.2	3.5
UJJAIN	0.8	1.2	1.5	1.1	1.0	1.2	1.8	1.7	2.3	1.9	1.3	1.1	1.2	1.4	1.7	1.4	2.2	1.2	1.0	1.5	1.2	0.6	0.5	0.9	1.2	1.5	0.7		2.0	2.1
DEWAS	1.7	1.9	2.0	1.7	1.4	2.1	2.2	2.1	3.1	2.7	2.1	1.7	1.6	2.0	1.7	1.6	2.6	1.9	1.7	1.7	1.5	1.6	1.6	2.2	2.2	1.8	1.8	1.9	1.7	2.2
MANDIDEEP	0.56	0.49	0.46	0.76	0.60	0.50	0.50	0.84	0.69	0.81	0.62	0.46	0.45	0.45	0.54	0.50	0.53	0.65	0.56	0.54	0.44	0.47	0.40	0.51	0.51	0.49	0.46	0.44	0.43	0.49
SINGRAULI	0.7	0.7	0.6	0.7	0.8	0.9	0.8	0.7	0.6	0.7	0.8	0.9	0.7	0.6	0.7	0.6	0.7	1.0	0.9	0.8	0.7	0.7	0.6	0.6	0.8	0.8	0.6	0.7	0.7	0.7

### City-wise Comparative Trend of Solar Radiations (November - 2019)

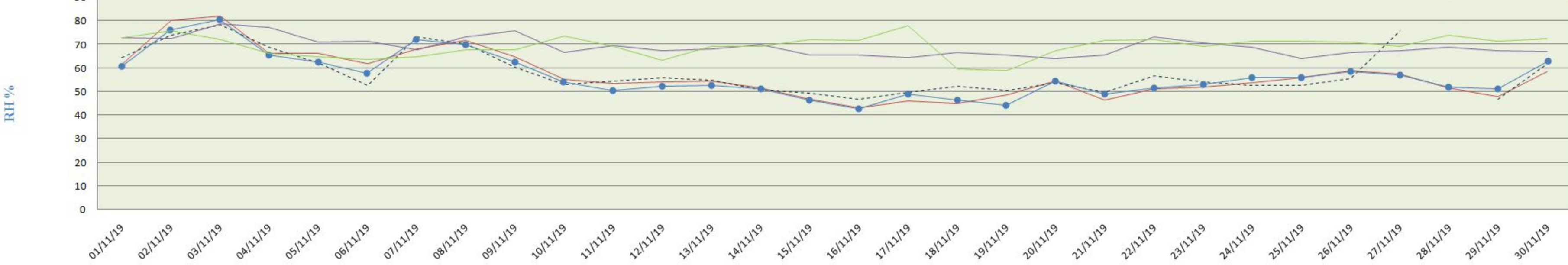
(Based On Raw Data)



	01/11/19	02/11/19	03/11/19	04/11/19	05/11/19	06/11/19	07/11/19	08/11/19	09/11/19	10/11/19	11/11/19	12/11/19	13/11/19	14/11/19	15/11/19	16/11/19	17/11/19	18/11/19	19/11/19	20/11/19	21/11/19	22/11/19	23/11/19	24/11/19	25/11/19	26/11/19	27/11/19	28/11/19	29/11/19	30/11/19
PITHAMPUR	129	132	100	251	214	218	196	114	83	100	122	143	111	119	113	101	93	114	159	107	112	158	132	99	102	119	151	143	150	97
UJJAIN	88	43	47	99	94	95	63	82	93	93	89	78	82	95	94	91	92	94	94	76	88	88	85	74	85	83	18		110	84
DEWAS	66	27	36	67	61	58	49	64	63	64	61	59	47	66	64	62	60	63	63	48	55	62	59	57	58	58	58	62	59	57
MANDIDEEP	54	55	37	35	54	46	51	47	42	48	49	48	43	42	47	46	44	44	44	43	38	39	42	40	43	38	39	39	39	39
SINGRAULI	47	45	45	43	45	47	51	52	53	43	47	49	48	48	47	45	51	31	48	45	74	41	43	71	40	36	41	40	41	37

### City-wise Comparative Trend of Relative Humidity (November - 2019)

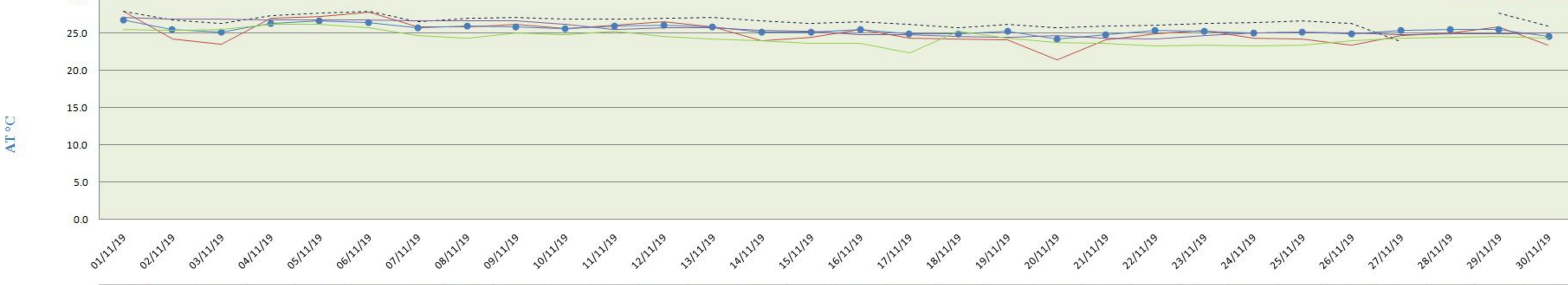
(Based On Raw Data)



	01/11/19	02/11/19	03/11/19	04/11/19	05/11/19	06/11/19	07/11/19	08/11/19	09/11/19	10/11/19	11/11/19	12/11/19	13/11/19	14/11/19	15/11/19	16/11/19	17/11/19	18/11/19	19/11/19	20/11/19	21/11/19	22/11/19	23/11/19	24/11/19	25/11/19	26/11/19	27/11/19	28/11/19	29/11/19	30/11/19
PITHAMPUR	61	80	82	66	66	62	68	72	65	55	53	54	55	52	47	43	46	45	48	55	46	51	52	53	56	59	57	52	48	58
UJJAIN	64	74	78	69	62	52	73	70	60	53	54	56	55	51	49	47	49	52	50	54	50	57	54	53	52	56	76		47	62
DEWAS	60	76	81	65	62	58	72	70	62	54	50	52	53	51	46	43	49	46	44	54	49	52	53	56	56	58	57	52	51	63
MANDIDEEP	73	73	79	77	71	71	68	73	76	67	70	67	68	70	65	65	64	67	65	64	65	73	71	69	64	66	67	69	67	67
SINGRAULI	73	76	72	66	65	64	65	68	68	74	69	63	69	69	72	72	78	60	59	67	72	72	69	71	71	71	69	74	71	73

### City-wise Comparative Trend of Atmospheric temperature (November - 2019)

(Based On Raw Data)



	01/11/19	02/11/19	03/11/19	04/11/19	05/11/19	06/11/19	07/11/19	08/11/19	09/11/19	10/11/19	11/11/19	12/11/19	13/11/19	14/11/19	15/11/19	16/11/19	17/11/19	18/11/19	19/11/19	20/11/19	21/11/19	22/11/19	23/11/19	24/11/19	25/11/19	26/11/19	27/11/19	28/11/19	29/11/19	30/11/19
PITHAMPUR	27.9	24.3	23.5	27.0	27.2	27.7	25.8	25.9	26.2	25.6	26.1	26.6	25.8	24.1	24.4	25.5	24.4	24.2	24.1	21.5	24.1	25.0	25.4	24.3	24.3	23.5	24.7	25.0	25.9	23.4
UJJAIN	28.0	26.8	26.4	27.4	27.8	28.0	26.6	27.1	27.2	27.0	26.9	27.1	27.2	26.7	26.4	26.6	26.2	25.8	26.2	25.7	26.0	26.1	26.3	26.5	26.7	26.3	23.9		27.8	26.0
DEWAS	26.9	25.5	25.2	26.4	26.6	26.5	25.8	26.0	25.9	25.6	26.0	26.1	25.9	25.2	25.2	25.5	25.0	25.0	25.4	24.3	24.9	25.4	25.3	25.0	25.2	24.9	25.4	25.6	25.5	24.6
MANDIDEEP	27.1	26.9	26.9	26.8	26.7	26.7	26.6	26.6	26.7	26.2	25.5	25.7	25.7	25.3	25.2	24.8	24.7	24.5	24.4	24.6	24.4	24.2	24.7	25.0	25.2	25.0	24.8	25.0	24.9	25.0
SINGRAULI	25.5	25.4	25.5	26.2	26.2	25.8	24.7	24.3	25.0	24.8	25.3	24.6	24.2	24.0	23.7	23.7	22.4	25.3	24.4	23.7	23.6	23.3	23.5	23.3	23.5	24.0	24.4	24.5	24.6	24.4