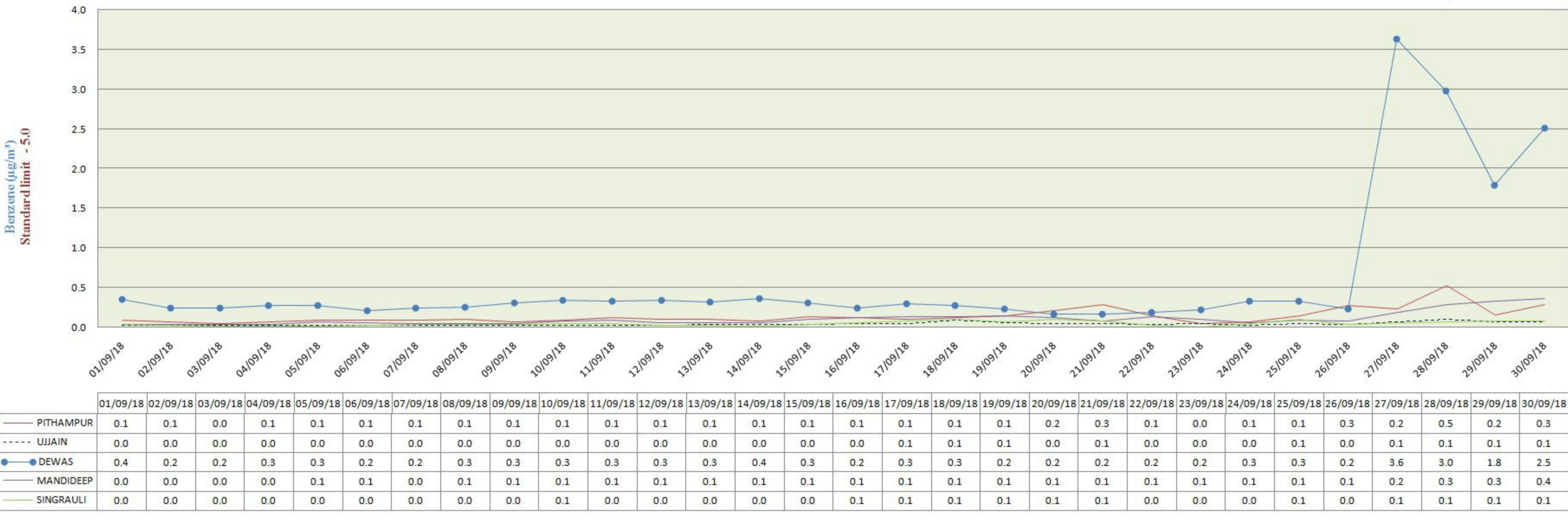


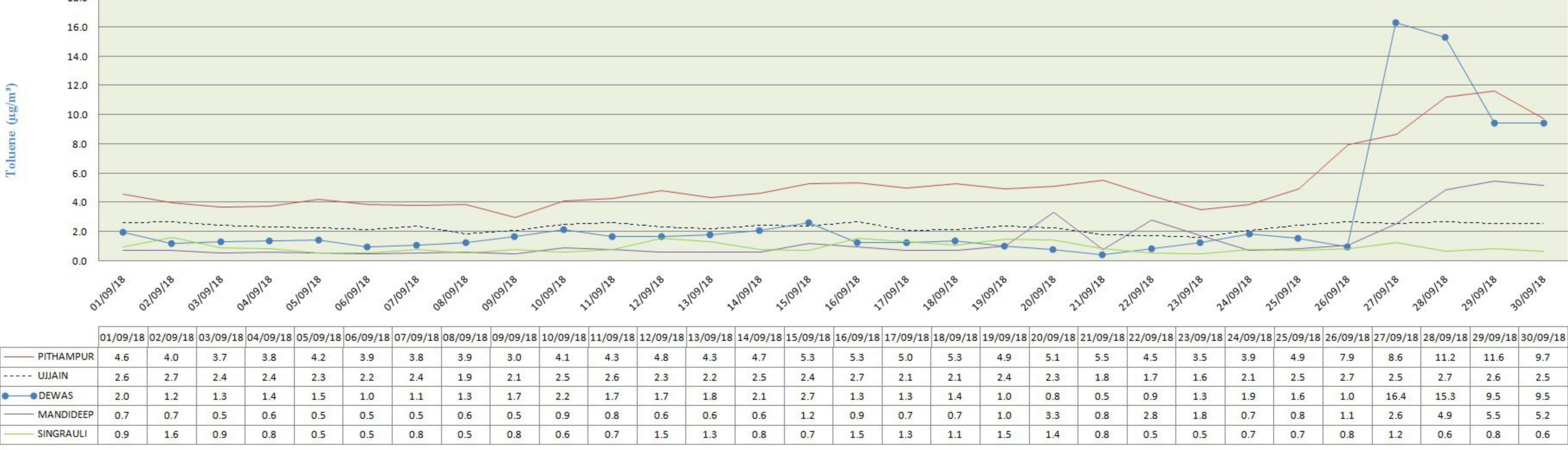
### City-wise Comparative Trend of Benzene (C<sub>6</sub>H<sub>6</sub>) (September - 2018)

(Based On Raw Data)



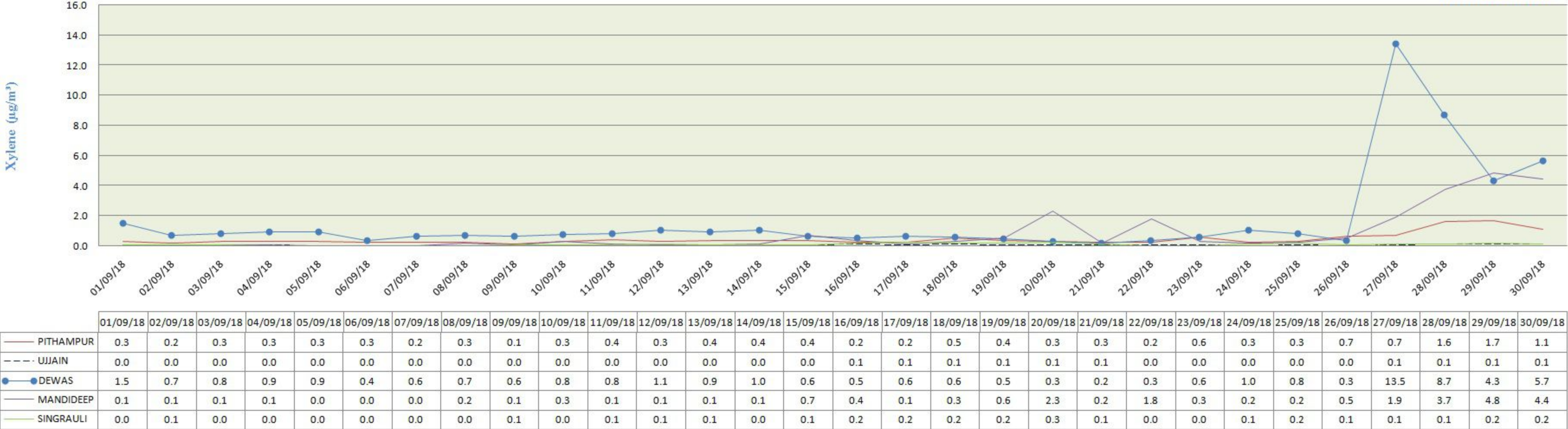
### City-wise Comparative Trend of Toluene (C<sub>7</sub>H<sub>8</sub>) (September - 2018)

(Based On Raw Data)



### City-wise Comparative Trend of Xylene (C<sub>8</sub>H<sub>10</sub>) (September - 2018)

(Based On Raw Data)



### City-wise Comparative Trend of Ethyl Benzene (C<sub>8</sub>H<sub>10</sub>) (September - 2018)

(Based On Raw Data)

